



Inde Enterprises, 745 Sector 8-B, Chandigarh 160009

✉ info@indeonline.in • ☎ 9316134502, 0172-4614415

INDE
reliable & caring since 1976

Please download latest datasheets from our website: <http://www.indeonline.in> • Our GST No.: 04AAAFI6116P1ZC

INSTALLATION, COMMISSIONING AND TRAINING REPORT

This is to certify that Inde Enterprises have successfully installed 4 nos. of 3-Axis Soldering Robot Model QUICKET9383E-BB1 at Amphenol Omniconnect India Pvt. Ltd., APG Plant-2, Plot number 21, CMDA's Industrial Area, Chitamanur Village, Maraimalai Nagar - 603209. All these robots have been supplied against Amphenol PO # 15294 dated 11/03/2023. Installation done from 29th May to 3rd June 2023.

Also, training has been given by Pankaj Sood-Manager (Robotics and Automation), Inde Enterprises, Chandigarh covering following points:

- 1 How to Operate Soldering Robots.
- 2 About mechanical settings.
- 3 How to make the Programs.
- 4 How to edit, download and run the existing Programs.
- 5 How to edit and correct the specific points in existing Programs.
- 6 Tips on preventive maintenance.
- 7 How to correctly replace the Solder Wire and Soldering Tips.

We have also addressed the programs optimization points in their 4 nos. of old supplied Robots.

Pankaj Sood
3/6/23

Pankaj Sood
Manager - Robotics & Automation
Inde Enterprises, Chandigarh



Shebindas A
03/06/23

Mr. A. Shebindas
(APG - Maintenance)
Amphenol Omniconnect India Pvt. Ltd.



Inde Enterprises, 745 Sector 8-B, Chandigarh 160009
✉ info@indeonline.in • ☎ 9316134502, 0172-4614415

INDE
reliable & caring since 1976

Please download latest datasheets from our website: <http://www.indeonline.in> • Our GST No.: 04AAAFI6116P1ZC

INSTALLATION, COMMISSIONING AND TRAINING REPORT

This is to certify that Inde Enterprises have successfully installed 9 quantity out of 26 quantity Dispensing Robots Model QUICK8320A at Prama Hikvision India Private Limited, Hira Industrial Estate Park, Near NH-8, Opposite Sai Vihar Resturant, Vasai Phata, Vasai (East) 401 208 which was supplied against your Purchase Order Number: PHIPL/FACTORY/19-20/127 dated 13 June, 2019. Installation period from 16th September, 2019 to 19th September, 2019.

Also training has been given by our Mr. Pankaj Sood, Manager - Robotics & Automation, Inde Enterprises Chandigarh on the following:

- 1 How to Operate Dispensing Robot
- 2 How to do settings of vacuum and Air Pressure
- 3 How to make the programs
- 4 How to edit the programs
- 5 How to run the programs

Following persons from Prama Hikvision India Private Limited attended training:

- 1 Mr. Parag Akre
- 2 Mr. Prasad Mali
- 3 Mr. Ankit Mahale
- 4 Mr. Ankush Khaire
- 5 Mr. Swapnil Sambare
- 6 Mr. Neeraj Kumar



Alex Hong

Alex Hong 19th Sep

Supply Chain Management Center
Prama Hikvision India Private Limited

Quick Intelligent Equipment Co., Ltd.

Add: No.11,Fengxiang Road,Wujin High-Tech Development Zone,Changzhou Jiangsu China

Post code: 213166

Tel: 0519- 86225678 86576372

E-Mail: overseas@quick-global.com

Fax: 0519-86558599

Website: www.quick-global.com

TO WHOM IT MAY CONCERN IN INDIA

We certify that we are working for complete professional indian market with:

Inde Enterprises

Head Office: 745 Sector-8B

Chandigarh 160 009

Contact: Romesh K. Singhal, Chief executive

Email: info@indeonline.in

Cell Phone: +91 93161 34502

Since mid of 2007 covering all our Models, including Dispensing Robots, Soldering Robots, Fume Extraction Systems, SMT/Thru-hole Rework Systems, Soldering Stations and other products made by us.

We also certify that many Models Inde Enterprises sell in above, are made by us exclusively for them: few examples are MFRS500USB, DSSLF04HESD, ISSD70, FumePro201-75, FES2-75 Fume Extraction System

Whatever Inde Enterprises sell in India and made by us, will not be offered by us directly to any other indian party for selling in india. This way Inde Enterprises has already made good investment to keep good stock of all our spare parts with them and also provides the necessary after-sales-service support for our products which they sell. This support is very important for all our present and future Indian customers.

This certification will remain valid till Mar 31st, 2025.

Quick Intelligent Equipment Co., Ltd.

快克智能装备股份有限公司
QUICK INTELLIGENT EQUIPMENT CO.,LTD.

戚国强

Mr.Qi Guoqiang

Managing Director

SNo.	Customer's Name & City	Qty
1	Amphenol Omnicomnect India Private Limited, Chennai (in repeat orders)	10
2	Bharat FIH Limited, Kanchipuram (in repeat orders)	4
3	Danlaw Electronics Assembly Limited, Goa	2
4	Flexi Efficads Private Limited, Bangalore	1
5	Intelux Electronics Private Limited, Pune	1
6	Kostal India Private Limited, Vellore (in repeat orders)	14
7	Mag Power, Pune	1
8	Minda Instruments Limited, Pune (in repeat orders)	12
9	MUP Electronics, Nashik	1
10	Nidec India Private Limited, Neemrana (in repeat orders)	18
11	Nidec Industrial Automation India Private Limited., Hubli	1
12	Prama Hikvision India Private Limited, Mumbai	9
13	Precision Electronic Components Manufacturing Company, Hyderabad	1
14	Reanu Micro Electronics Private Limited, Pune	1
15	Sahyadri Udyog, Pune	1
16	Shakti Pumps (India) Limited, Pithampur	1
17	Siritech Electronics, Bangalore	1
18	Vijay Electricals, Ahmednagar	1
19	Vishal Engineering Company, Pune	3



**3-Axis Single Head
Single Platform
Soldering Robot
Model ET9383C**



**4-Axis Single Head
Single Platform
Soldering Robot
Model ET9384C**



**3-Axis Dual Head
Single Platform
Soldering Robot
Model ET9383ED**

We supply incredibly high reliability proven (customers are using for more than 10 years now) robotics solutions for soldering, dispensing and screw locking at with our total technical support and spare parts back-up

[Click here to view DEMO Video of Soldering Robot](#)



**3-Axis Single
Dispensing Head
Dispensing Robot
Model ET8283**



**3-Axis Single
Screwing Head
Screw Locking
Robot Model
ET7383K**

Warranty is 12 months from the date of invoice. It excludes all consumable parts as Heating Elements, Temperature Sensors, Soldering Tips, Cleaning Sponges etc., and any sort of mechanically damaged parts. While the information contained herein in, has been carefully compiled to the best of our knowledge, nothing is intended as representation and warranty on our part; and no statement shall be construed as recommendation to infringe any of existing patents. We accept no liability of whatsoever for any faults and errors in the information contained herein. Contents of this catalogue and specifications of the products, are subject to change without notice due to continuous improvements.

on-site services can be provided at extra charges if pre-paid by customer in advance

increases production with less hands • ensures soldering quality for each joint



Features

- Specially designed for soldering cables, USB, connectors, aviation plugs, PCB, terminals and switches etc.
- Designed to replace manual soldering stations to improve soldering efficiency, consistency and quality
- Concise appearance and stable heavy duty structure.
- LCD screen, soldering time and wire feeding parameters are adjustable
- Stepper motor controlled, no need of external compressed air
- Easy programming, no need for any separate programming module
- High frequency current heating provided precise temperature and faster temperature recovery.

Scope of Supply:

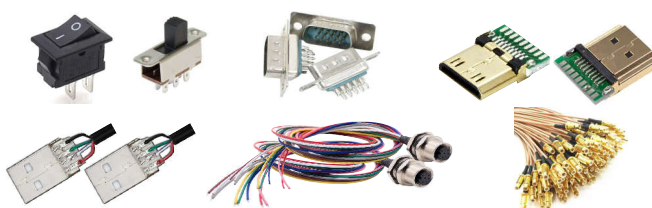
- 1-Axis Soldering Robot
- Soldering & Wire Feeding Controller
- Soldering Head & Wire Feeder
- Soldering Tip
- Foot Switch
- Instruction Manual

[Click here to view Video](#)

Specifications	Model: ET9181
Input Supply	100-240V AC, 50 Hz
Power Consumption	280W
Temperature Range	200 ~ 500°C
Temperature Stability	±3°C (No load)
Number of Axis	1
Motor Range	80mm
Soldering Time	0.01 ~ 9.99S
Solder Wire Diameter	0.8, 1.0, 1.2, 1.6mm
Dimensions (WxDxH)	285 x 420 x 265 mm
Weight	13 kg

Applications

- Communications industry: Data cable, USB, HDMI and FPC etc.
- Photovoltaic industry: LED strip, rectifier, EnduraLED and lamp etc.
- Home appliance: remote control panel, control board, computer speakers and switches etc.
- Automotive industry: Ignition switch, Sensor, Automobile ABS ECU and navigator etc.
- Toys: smart toys PCBA and wireless handle etc.



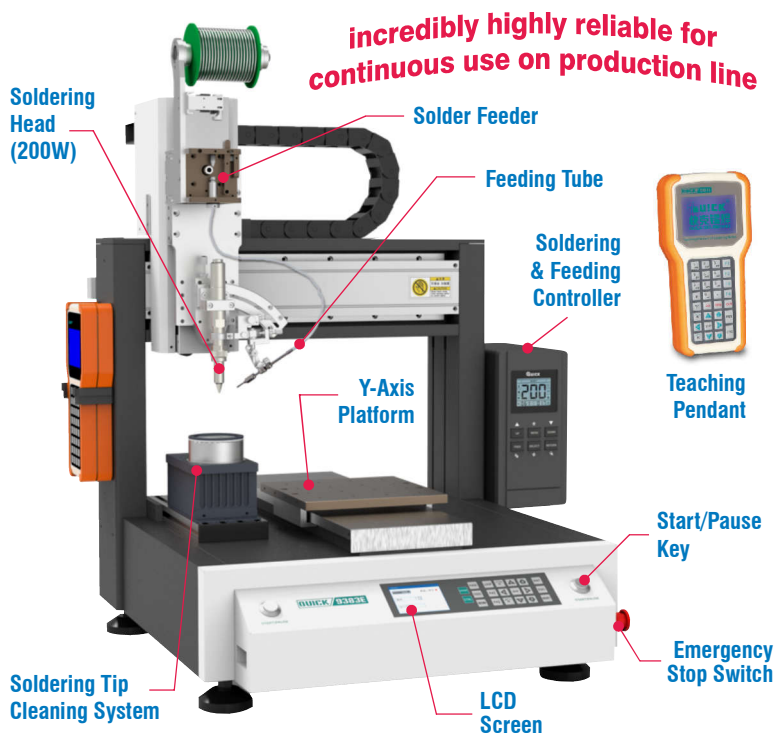
Accessories and Spares for ET9181 Soldering Robot



Warranty is 12 months from the date of invoice. It excludes all consumable parts as Heating Elements, Temperature Sensors, Soldering Tips, Cleaning Sponges etc., and any sort of mechanically damaged parts. While the information contained herein in, has been carefully compiled to the best of our knowledge, nothing is intended as representation and warranty on our part; and no statement shall be construed as recommendation to infringe any of existing patents. We accept no liability of whatsoever for any faults and errors in the information contained herein. Contents of this catalogue and specifications of the products, are subject to change without notice due to continuous improvements.

on-site services can be provided at extra charges if pre-paid by customer in advance

increases production with less hands • ensures soldering quality for each joint



incredibly highly reliable for continuous use on production line

Features

Motion Platform

E-Series Soldering Platform is of high speed & high accuracy with low noise, closed-loop control of Y-axis, no lost steps, strong load capacity, easy maintenance, rich I/O interfaces, support MES to read local data and expand operation use, two-hand start (optional), ESD safe

Heating Controller

QUICK378FA Heating Controller uses high frequency eddy current heating for stable and reliable temperature, fast thermal recovery, RS-485 interface for real-time monitoring and to set parameters like temperature, solder feeding etc, alarm for abnormal temperature and solder shortage etc.

Soldering Pencil

QUICK9018M Soldering Pencil has front temperature sensor for quick sensing of solder joint temperature fluctuation and rapid thermal recovery.

Solder Feeder

QUICK371TAA, small size and high precision. controlled by precision stepper motor, the minimum solder feeding length can reach 0.1mm, solder shortage and block alarm function available.

Teaching Pendant

QUICK9011D Teaching Pendant, supports array and group functions, with the function of side points, and supports various processes such as single-step operation, integral machining, simulated operation and automatic circular

[Click here to view Video](#)

Scope of Supply:

- 3-Axis Soldering Robot
- Hand-held Teaching Pendant
- Soldering & Wire Feeding Controller
- Soldering & Wire Feeding Head
- 911G Series Soldering Tip
- Soldering Tip Cleaning System

Specifications		Model: ET9383E-BB1	Model: ET9483E-BB1
Input Supply		100-240V AC, 50 Hz	100-240V AC, 50 Hz
Heating Controller Power		200W	200W
Power Consumption		500W	500W
Temperature Range		50 ~ 500°C	50 ~ 500°C
Number of Axis		3	3
Movement Range	X & Y	300mm	400mm
	Z	100mm	100mm
Moving Speed	X & Y	0.1 ~ 800mm/sec	0.1 ~ 800mm/sec
	Z	0.1 ~ 300mm/sec	0.1 ~ 300mm/sec
Repeat Accuracy	X, Y & Z	±0.01mm	±0.01mm
Operating Range		240 x 300mm	340 x 400mm
Maximum Payload	Z-Axis	5 kg	5 kg
	Platform	8 kg	8 kg
Dimensions (WxDxH)		630 x 607 x 730 mm	733 x 710 x 742 mm
Weight		40 kg	45 kg

Warranty is 12 months from the date of invoice. It excludes all consumable parts as Heating Elements, Temperature Sensors, Soldering Tips, Cleaning Sponges etc., and any sort of mechanically damaged parts.
 While the information contained herein in, has been carefully compiled to the best of our knowledge, nothing is intended as representation and warranty on our part; and no statement shall be construed as recommendation to infringe any of existing patents. We accept no liability of whatsoever for any faults and errors in the information contained herein. Contents of this catalogue and specifications of the products, are subject to change without notice due to continuous improvements.

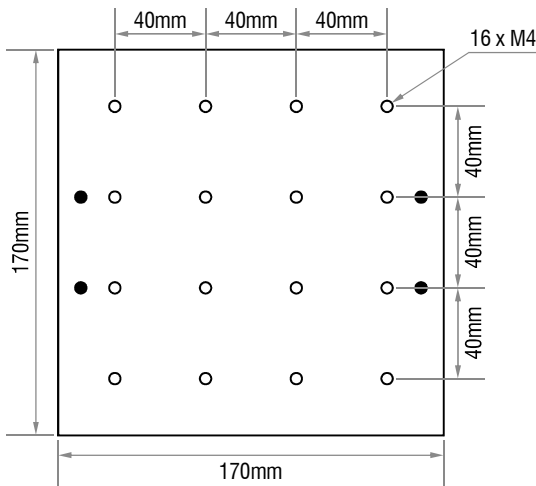
on-site services can be provided at extra charges if pre-paid by customer in advance

increases production with less hands • ensures soldering quality for each joint

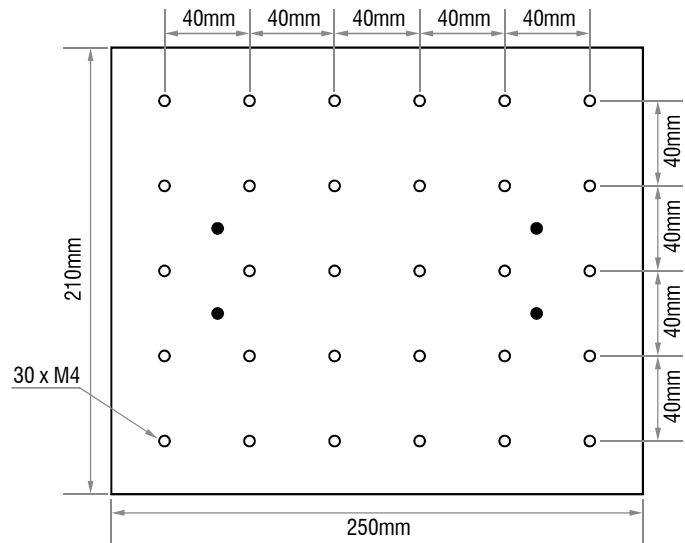
Few user references (many with repeat orders) in India for Robotic solutions by Quick

- Minda Stoneridge, Pune (more than 10 in repeat....repeat orders in the last 3 years)
- Amphenol, Chennai (repeat orders)
- Mag Power, Pune
- Mindarika, Gurgaon
- Nidec, Neemrana (Japanese MNC) more than 10
- Interface, Gurgaon
- Nokia, Chennai (repeat orders)
- Precision Electronics Hyderabad
- Flash, Pune
- BG LI-IN, Aurangabad
- Tyntix, Bangalore

Platform Layout of Soldering Robots to prepare PCB Fixture as per your applications



Model ET9383E-BB1



Model ET9483E-BB1

Optionally available Accessories for these Soldering Robots

Tip Position Calibration Device Model QUICK9036

- High positioning precision of 0.02mm
- Long life as it uses photo-electric non-contact type of test
- One key operation, just press "Calibrate" to complete while calibrating the tips position
- Automatically calibrate the coordinates after replacing the tip, eliminate to coordinates differences occur due to tip replacement
- Suitable for many applications in 3-axis and 4-axis Robots



Powerful Fumes Extraction System Model FumePRO101-50LC

⇒ Extensively used in Soldering Robots, Solder Pot, R&D lab etc.

No Plumbing required
Just position on the
Table as needed

Burn-proof type
Fume Absorbers

Rigid
Gooseneck
Arms can be
positioned
anywhere
on table

Scope of Supply

- 1x FumePRO101 Main Extraction Unit
- 1x Extraction Arm (50mm dia, 1.2m long)
- 1x Round Fume Absorbing Hood
- 1x Speed Control Regulator
- 5x Spare Pre-Filters



Nitrogen Generator Model QUICK9036

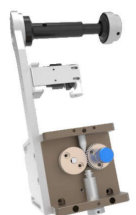
- No need of the power supply, just need compressed air
- Provide Nitrogen with the purity of 99.9%
- Used with QUICK9018BMT Soldering Pencil to improve the soldering efficiency



Solder Wire Feeder Model QUICK371TIAA

The Feeder in this version is adapted to be mounted in the upper part of the robot's head (on the housing). The wire feeding mechanism is based on a stepper motor and a cutting gear system. The cut of the solder wire translates into better flux flow, less spatter and its more effective operation.

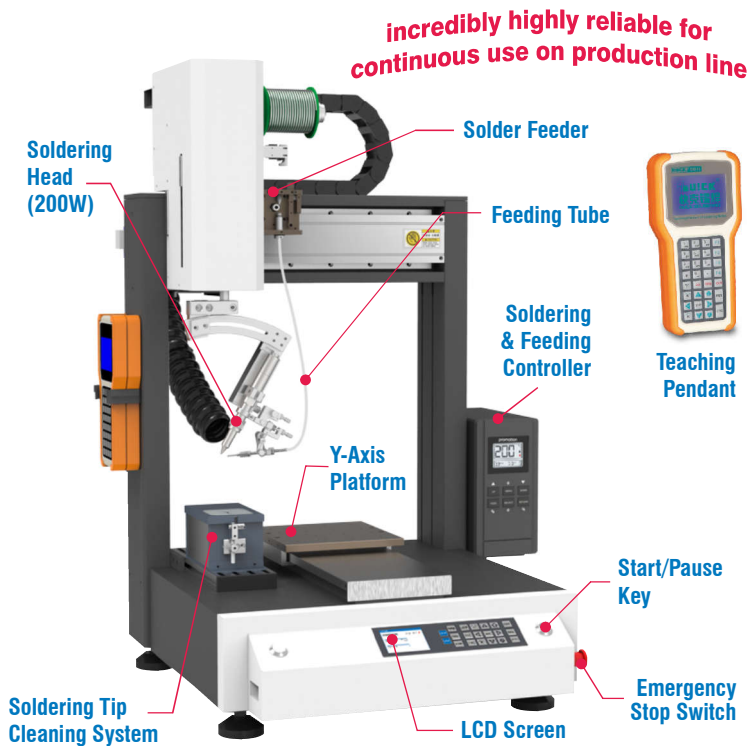
Available for 0.5mm to 1.2mm dia solder wires



Warranty is 12 months from the date of invoice. It excludes all consumable parts as Heating Elements, Temperature Sensors, Soldering Tips, Cleaning Sponges etc., and any sort of mechanically damaged parts. While the information contained herein in, has been carefully compiled to the best of our knowledge, nothing is intended as representation and warranty on our part; and no statement shall be construed as recommendation to infringe any of existing patents. We accept no liability of whatsoever for any faults and errors in the information contained herein. Contents of this catalogue and specifications of the products, are subject to change without notice due to continuous improvements.

on-site services can be provided at extra charges if pre-paid by customer in advance

increases production with less hands • ensures soldering quality for each joint



Features

Motion Platform

E-Series Soldering Platform is of high speed & high accuracy with low noise, closed-loop control of Y-axis, no lost steps, strong load capacity, easy maintenance, rich I/O interfaces, support MES to read local data and expand operation use, two-hand start (optional), ESD safe

Heating Controller

QUICK378FA Heating Controller uses high frequency eddy current heating for stable and reliable temperature, fast thermal recovery, RS-485 interface for real-time monitoring and to set parameters like temperature, solder feeding etc, alarm for abnormal temperature and solder shortage etc.

Soldering Pencil

QUICK9018M Soldering Pencil has front temperature sensor for quick sensing of solder joint temperature fluctuation and rapid thermal recovery.

Solder Feeder

QUICK371TAA, small size and high precision. controlled by precision stepper motor, the minimum solder feeding length can reach 0.1mm, solder shortage and block alarm function available.

Teaching Pendant

QUICK9011D Teaching Pendant, supports array and group functions, with the function of side points, and supports various processes such as single-step operation, integral machining, simulated operation and automatic circular

[Click here to view Video](#)

Scope of Supply:

- 4-Axis Soldering Robot
- Hand-held Teaching Pendant
- Soldering & Wire Feeding Controller
- Soldering & Wire Feeding Head
- 911G Series Soldering Tip
- Soldering Tip Cleaning System

Specifications		Model: ET9384E-BB1	Model: ET9484E-BB1
Input Supply		100-240V AC, 50 Hz	100-240V AC, 50 Hz
Heating Controller Power		200W	200W
Power Consumption		600W	600W
Temperature Range		50 ~ 500°C	50 ~ 500°C
Number of Axis		4	4
Movement Range	X & Y	300mm	400mm
	Z	100mm	100mm
	R	±180°	±180°
Moving Speed	X & Y	0.1 ~ 800mm/sec	0.1 ~ 800mm/sec
	Z	0.1 ~ 300mm/sec	0.1 ~ 300mm/sec
	R	±0.1 ~ 800°/sec	±0.1 ~ 800°/sec
Repeat Accuracy	X, Y & Z	±0.01mm	±0.01mm
	R	±0.02°	±0.02°
Operating Range		240 x 300mm	340 x 400mm
Maximum Payload	Z-Axis	3 kg	3 kg
	Platform	8 kg	8 kg
Dimensions (WxDxH)		633 x 618 x 852 mm	732 x 723 x 852 mm
Weight		45 kg	55 kg

Warranty is 12 months from the date of invoice. It excludes all consumable parts as Heating Elements, Temperature Sensors, Soldering Tips, Cleaning Sponges etc., and any sort of mechanically damaged parts. While the information contained herein in, has been carefully compiled to the best of our knowledge, nothing is intended as representation and warranty on our part; and no statement shall be construed as recommendation to infringe any of existing patents. We accept no liability of whatsoever for any faults and errors in the information contained herein. Contents of this catalogue and specifications of the products, are subject to change without notice due to continuous improvements.

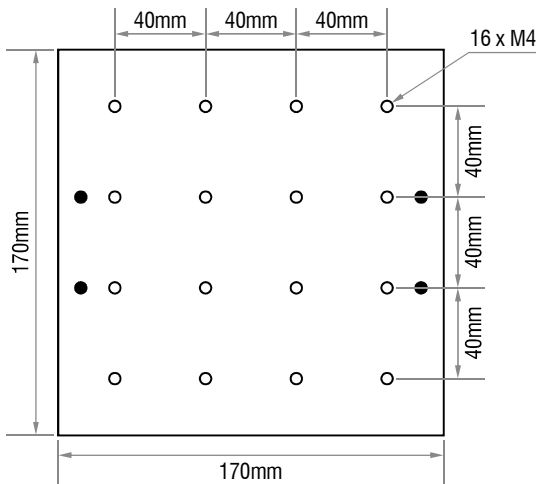
on-site services can be provided at extra charges if pre-paid by customer in advance

increases production with less hands • ensures soldering quality for each joint

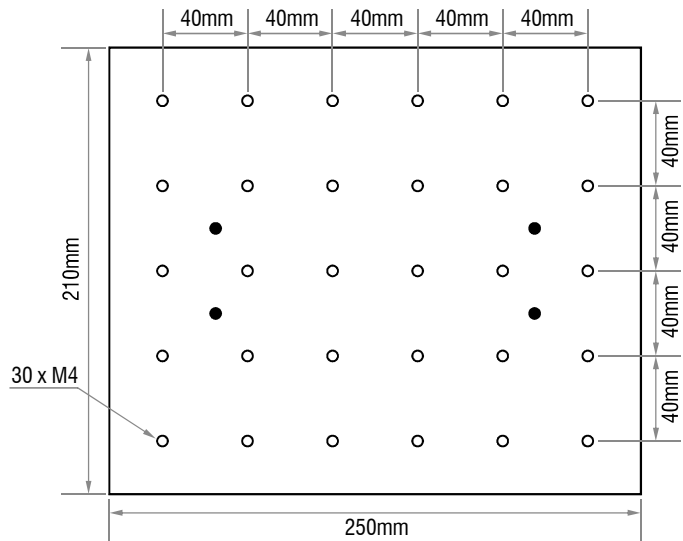
Few user references (many with repeat orders) in India for Robotic solutions by Quick

- Minda Stoneridge, Pune (more than 10 in repeat....repeat orders in the last 3 years)
- Amphenol, Chennai (repeat orders)
- Mag Power, Pune
- Mindarika, Gurgaon
- Nidec, Neemrana (Japanese MNC) more than 10
- Interface, Gurgaon
- Nokia, Chennai (repeat orders)
- Precision Electronics Hyderabad
- Flash, Pune
- BG LI-IN, Aurangabad
- Tyntix, Bangalore

Platform Layout of Soldering Robots to prepare PCB Fixture as per your applications



Model ET9384E-BB1



Model ET9484E-BB1

Optionally available Accessories for these Soldering Robots

Tip Position Calibration Device Model QUICK9036

- High positioning precision of 0.02mm
- Long life as it uses photo-electric non-contact type of test
- One key operation, just press "Calibrate" to complete while calibrating the tips position
- Automatically calibrate the coordinates after replacing the tip, eliminate to coordinates differences occur due to tip replacement
- Suitable for many applications in 3-axis and 4-axis Robots



Nitrogen Generator Model QUICK9036

- No need of the power supply, just need compressed air
- Provide Nitrogen with the purity of 99.9%
- Used with QUICK9018BMT Soldering Pencil to improve the soldering efficiency



Powerful Fumes Extraction System Model FumePRO101-50LC

⇒ Extensively used in Soldering Robots, Solder Pot, R&D lab etc.

No Plumbing required
Just position on the
Table as needed

Burn-proof type
Fume Absorbers

Rigid
Gooseneck
Arms can be
positioned
anywhere
on table

Scope of Supply

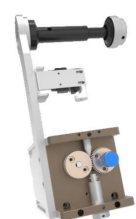
- 1x FumePRO101 Main Extraction Unit
- 1x Extraction Arm (50mm dia, 1.2m long)
- 1x Round Fume Absorbing Hood
- 1x Speed Control Regulator
- 5x Spare Pre-Filters



Solder Wire Feeder Model QUICK371TIAA

The Feeder in this version is adapted to be mounted in the upper part of the robot's head (on the housing). The wire feeding mechanism is based on a stepper motor and a cutting gear system. The cut of the solder wire translates into better flux flow, less spatter and its more effective operation.

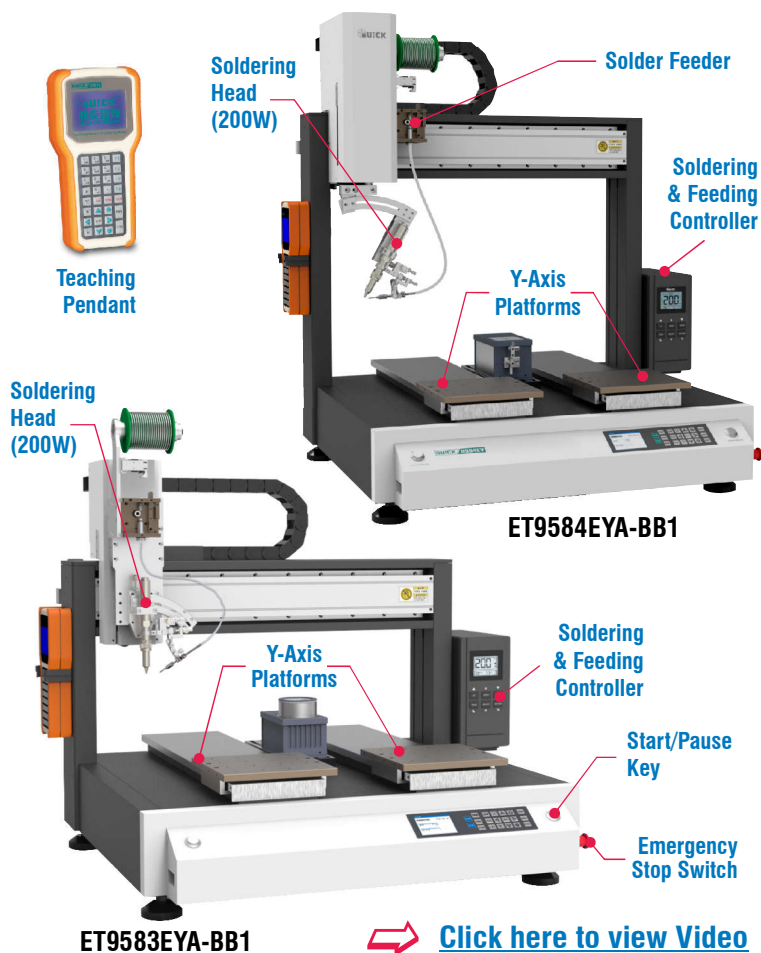
Available for 0.5mm to 1.2mm dia solder wires



Warranty is 12 months from the date of invoice. It excludes all consumable parts as Heating Elements, Temperature Sensors, Soldering Tips, Cleaning Sponges etc., and any sort of mechanically damaged parts. While the information contained herein in, has been carefully compiled to the best of our knowledge, nothing is intended as representation and warranty on our part; and no statement shall be construed as recommendation to infringe any of existing patents. We accept no liability of whatsoever for any faults and errors in the information contained herein. Contents of this catalogue and specifications of the products, are subject to change without notice due to continuous improvements.

on-site services can be provided at extra charges if pre-paid by customer in advance

increases production with less hands • ensures soldering quality for each joint



Features

Motion Platform

E-Series Soldering Platform is of high speed & high accuracy with low noise, closed-loop control of Y-axis, no lost steps, strong load capacity, easy maintenance, rich I/O interfaces, support MES to read local data and expand operation use, two-hand start (optional), ESD safe

Heating Controller

QUICK378FA Heating Controller uses high frequency eddy current heating for stable and reliable temperature, fast thermal recovery, RS-485 interface for real-time monitoring and to set parameters like temperature, solder feeding etc, alarm for abnormal temperature and solder shortage etc.

Soldering Pencil

QUICK9018M Soldering Pencil has front temperature sensor for quick sensing of solder joint temperature fluctuation and rapid thermal recovery.

Solder Feeder

QUICK371TAA, small size and high precision. controlled by precision stepper motor, the minimum solder feeding length can reach 0.1mm, solder shortage and block alarm function available.

Teaching Pendant

QUICK9011D Teaching Pendant, supports array and group functions, with the function of side points, and supports various processes such as single-step operation, integral machining, simulated operation and automatic circular

[Click here to view Video](#)

Specifications		Model: ET9583EYA-BB1	Model: ET9584EYA-BB1
Input Supply		100-240V AC, 50 Hz	100-240V AC, 50 Hz
Heating Controller Power		200W	200W
Power Consumption		500W	600W
Temperature Range		50 ~ 500°C	50 ~ 500°C
Number of Axis		3	4
Movement Range	X & Y	500mm & 400mm	500mm & 400mm
	Z	100mm	100mm
	R	-	±180°
Moving Speed	X & Y	0.1 ~ 800mm/sec	0.1 ~ 800mm/sec
	Z	0.1 ~ 300mm/sec	0.1 ~ 300mm/sec
	R	-	±0.1 ~ 800°/sec
Repeat Accuracy	X, Y & Z	±0.01mm	±0.01mm
	R	-	±0.02°
Operating Range		240 x 300mm	340 x 400mm
Maximum Payload	Z-Axis	3 kg	3 kg
	Platform	8 kg	8 kg
Dimensions (WxDxH)		633 x 618 x 852 mm	732 x 723 x 852 mm
Weight		45 kg	55 kg

Warranty is 12 months from the date of invoice. It excludes all consumable parts as Heating Elements, Temperature Sensors, Soldering Tips, Cleaning Sponges etc., and any sort of mechanically damaged parts.
 While the information contained herein in, has been carefully compiled to the best of our knowledge, nothing is intended as representation and warranty on our part; and no statement shall be construed as recommendation to infringe any of existing patents. We accept no liability of whatsoever for any faults and errors in the information contained herein. Contents of this catalogue and specifications of the products, are subject to change without notice due to continuous improvements.

on-site services can be provided at extra charges if pre-paid by customer in advance

increases production with less hands • ensures soldering quality for each joint

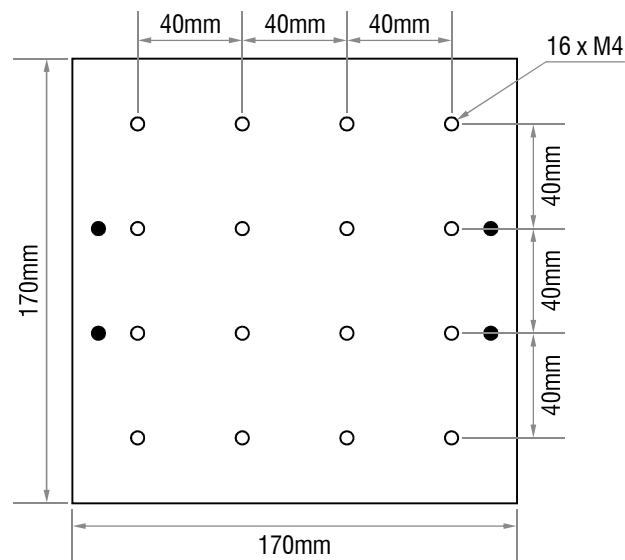
Few user references (many with repeat orders) in India for Robotic solutions by Quick

- Minda Stoneridge, Pune (more than 10 in repeat....repeat orders in the last 3 years)
- Amphenol, Chennai (repeat orders)
- Mag Power, Pune
- Mindarika, Gurgaon
- Nidec, Neemrana (Japanese MNC) more than 10
- Interface, Gurgaon
- Nokia, Chennai (repeat orders)
- Precision Electronics Hyderabad
- Flash, Pune
- BG LI-IN, Aurangabad
- Tymtix, Bangalore

Scope of Supply:

- 3-Axis/4-Axis Soldering Robot
- Hand-held Teaching Pendant
- Soldering & Wire Feeding Controller
- Soldering & Wire Feeding Head
- 911G Series Soldering Tip
- Soldering Tip Cleaning System

Platform Layout of Soldering Robots to prepare PCB Fixture as per your applications



Model ET9583EYA-BB1 and Model ET9584EYA-BB1

Optionally available Accessories for these Soldering Robots

Tip Position Calibration Device Model QUICK9036

- High positioning precision of 0.02mm
- Long life as it uses photo-electric non-contact type of test
- One key operation, just press "Calibrate" to complete while calibrating the tips position
- Automatically calibrate the coordinates after replacing the tip, eliminate to coordinates differences occur due to tip replacement
- Suitable for many applications in 3-axis and 4-axis Robots



Nitrogen Generator Model QUICK9036

- No need of the power supply, just need compressed air
- Provide Nitrogen with the purity of 99.9%
- Used with QUICK9018BMT Soldering Pencil to improve the soldering efficiency



Powerful Fumes Extraction System Model FumePRO101-50LC

⇒ Extensively used in Soldering Robots, Solder Pot, R&D lab etc.

No Plumbing required
Just position on the
Table as needed

Burn-proof type
Fume Absorbers

Rigid
Gooseneck
Arms can be
positioned
anywhere
on table

Scope of Supply

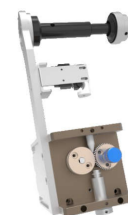
- 1x FumePRO101 Main Extraction Unit
- 1x Extraction Arm (50mm dia, 1.2m long)
- 1x Round Fume Absorbing Hood
- 1x Speed Control Regulator
- 5x Spare Pre-Filters



Solder Wire Feeder Model QUICK371TIAA

The Feeder in this version is adapted to be mounted in the upper part of the robot's head (on the housing). The wire feeding mechanism is based on a stepper motor and a cutting gear system. The cut of the solder wire translates into better flux flow, less spatter and its more effective operation.

Available for 0.5mm to 1.2mm dia solder wires



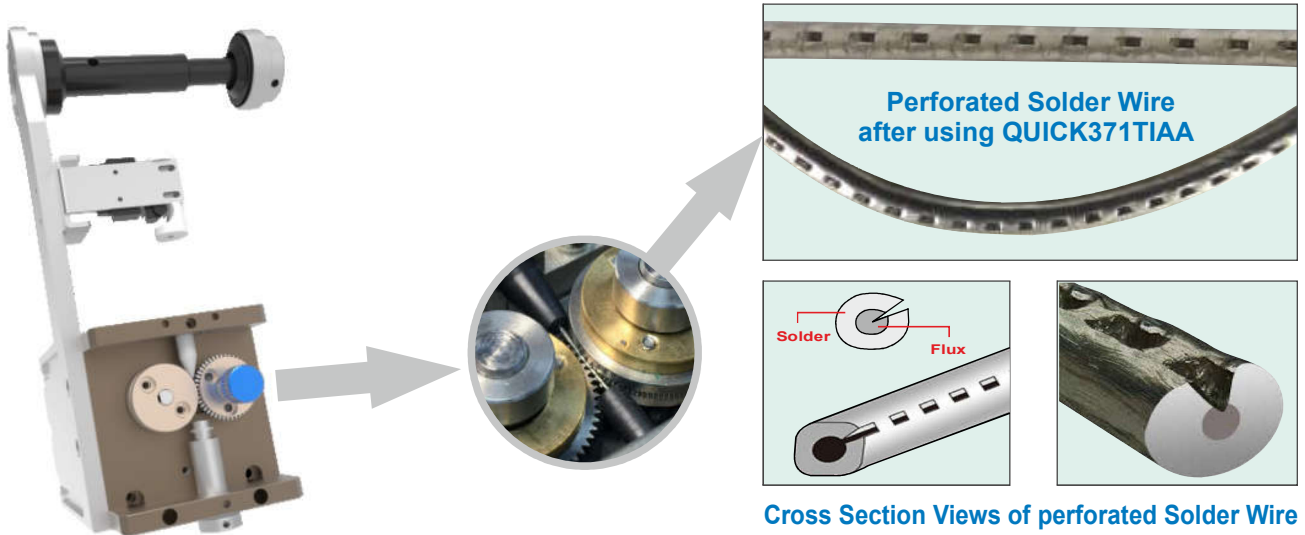
on-site services can be provided at extra charges if pre-paid by customer in advance

Warranty is 12 months from the date of invoice. It excludes all consumable parts as Heating Elements, Temperature Sensors, Soldering Tips, Cleaning Sponges etc., and any sort of mechanically damaged parts.
While the information contained herein in, has been carefully compiled to the best of our knowledge, nothing is intended as representation and warranty on our part; and no statement shall be construed as recommendation to infringe any of existing patents. We accept no liability of whatsoever for any faults and errors in the information contained herein. Contents of this catalogue and specifications of the products, are subject to change without notice due to continuous improvements.

avoids solder balls formation during soldering

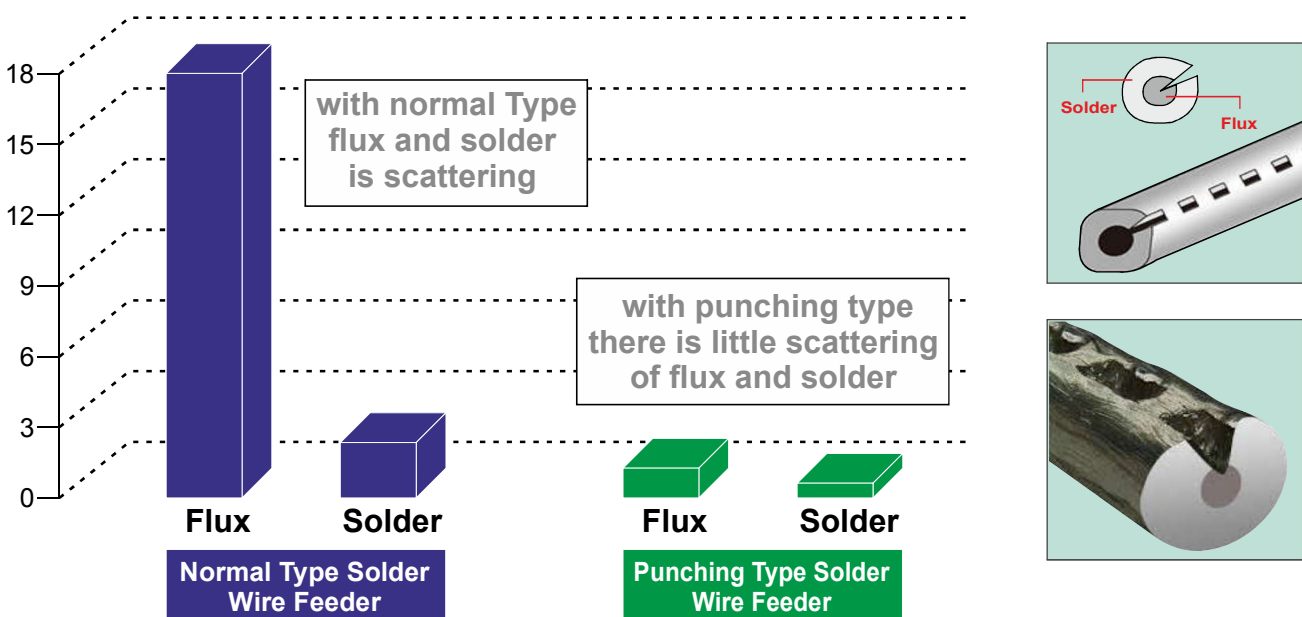
Selection of Solder Wire Feeder is also critical and important to avoid Solder Balls formation and splashing of solder and flux during Soldering

Latest Technology Punching/Perforated Type We recommend latest technology Punching type Soldering Wire Feeder for Robotic Soldering which punches holes in soldering wires at regular interval and allows better Flux flow and out-gassing during the soldering process which avoids SOLDER FLUX SPLASHES and avoids formation of Soldering Balls during soldering



Various examples of solder ball formation during soldering with normal type Feeding Unit

Graphical representation of micro Solder Balls and Flux Scattering



Warranty is 12 months from the date of invoice. It excludes all consumable parts as Heating Elements, Temperature Sensors, Soldering Tips, Cleaning Sponges etc., and any sort of mechanically damaged parts. While the information contained herein in, has been carefully compiled to the best of our knowledge, nothing is intended as representation and warranty on our part; and no statement shall be construed as recommendation to infringe any of existing patents. We accept no liability of whatsoever for any faults and errors in the information contained herein. Contents of this catalogue and specifications of the products, are subject to change without notice due to continuous improvements.

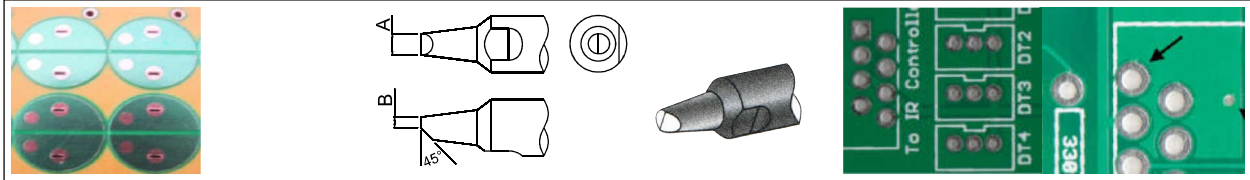
on-site services can be provided at extra charges if pre-paid by customer in advance

Customized Soldering Robot Tips are possible to meet specific requirements

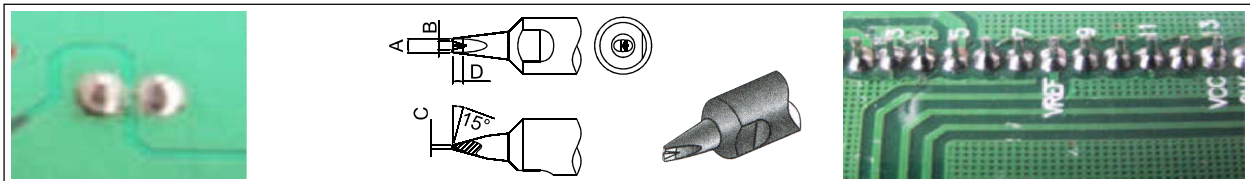
Why selection of correct Soldering Tip is critical and important to ensure quality of each Soldering Joint and also to achieve practically zero rejection for Solder Joints

Soldering Tip selection plays an important role to optimize soldering quality. That is why it is necessary to select the most suitable Soldering Tip. Below are few illustrations for selection of Soldering Tips for different applications.

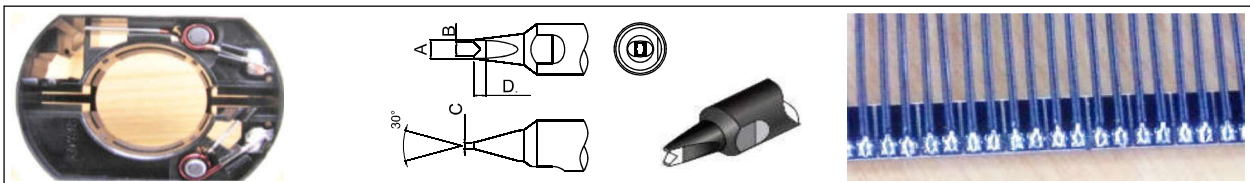
PC type of Soldering Tip is recommended for large pads



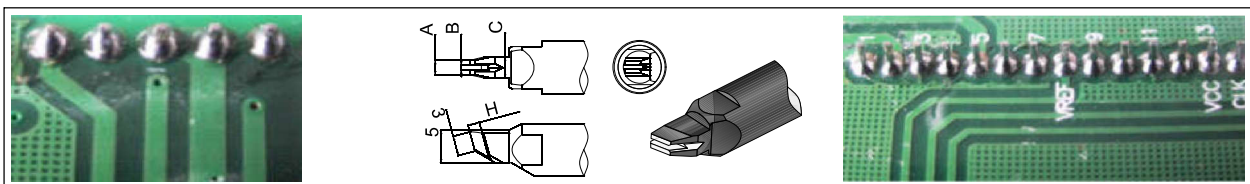
DV1 type of Soldering Tip is recommended for thru hole leads & connector/LCD pins



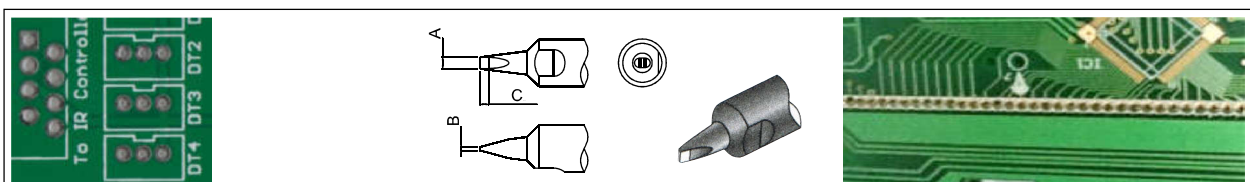
DV2 type of Soldering Tip is recommended for wire harnessing



N type of Soldering Tip is recommended for drag soldering of row of connectors



D type of Soldering Tip is recommended for line and point soldering on PCBs



We will be able to help you to select correct Soldering Tip, for that we need following from you:

- Photo/s of your Jobs on which you want to solder
- Photo/s of your components which you want to solder

Please either email these at romesh1947@gmail.com or Whatsapp on Cell: 9316134502

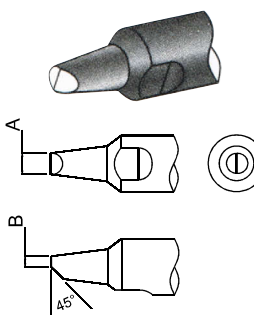
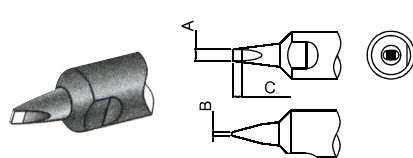
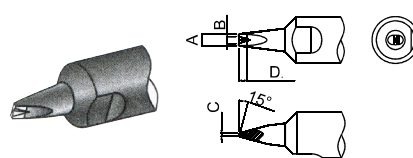
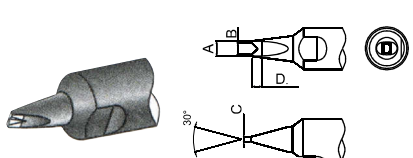
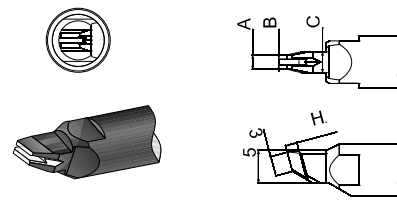
Warranty is 12 months from the date of invoice. It excludes all consumable parts as Heating Elements, Temperature Sensors, Soldering Tips, Cleaning Sponges etc., and any sort of mechanically damaged parts.

on-site services can be provided at extra charges if pre-paid by customer in advance

While the information contained herein in, has been carefully compiled to the best of our knowledge, nothing is intended as representation and warranty on our part; and no statement shall be construed as recommendation to infringe any of existing patents. We accept no liability of whatsoever for any faults and errors in the information contained herein. Contents of this catalogue and specifications of the products, are subject to change without notice due to continuous improvements.

Customized Soldering Robot Tips are possible to meet specific requirements

911B, 911G, 912 and 913-Series Soldering Tips for various Soldering Robots

Types	Part Number	Size (A)	Size (B)	Size (C)	Size (D)
Sloped Type 	*** -10PC	1.0mm	0.5mm		
	*** -13PC	1.3mm	0.65mm		
	*** -16PC	1.6mm	0.8mm		
	*** -20PC	2.0mm	1.0mm		
	*** -24PC	2.4mm	1.2mm		
	*** -30PC	3.0mm	1.5mm		
	*** -40PC	4.0mm	2.0mm		
Chisel Type 	*** -16D	1.6mm	0.6mm	1.5mm	
	*** -20D	2.0mm	0.8mm	1.5mm	
	*** -24D	2.4mm	0.8mm	1.5mm	
	*** -30D	3.0mm	1.0mm	2.0mm	
	*** -40D	4.0mm	1.2mm	2.5mm	
V-Notch Type 	*** -16DV1	1.6mm	1.0mm	0.6mm	1.5mm
	*** -20DV1	2.0mm	1.2mm	0.8mm	1.5mm
	*** -24DV1	2.4mm	1.4mm	0.8mm	1.5mm
	*** -30DV1	3.0mm	1.6mm	1.0mm	2.0mm
	*** -40DV1	4.0mm	2.0mm	1.2mm	2.5mm
V-Notch Type 	*** -16DV2	1.6mm	1.0mm	0.6mm	1.8mm
	*** -20DV2	2.0mm	1.4mm	0.8mm	1.5mm
	*** -24DV2	2.4mm	1.6mm	0.8mm	2.0mm
	*** -30DV2	3.0mm	2.2mm	1.0mm	2.3mm
	*** -40DV2	4.0mm	3.0mm	1.2mm	2.8mm
N Type 	*** -22N08H18	2.2mm	0.8mm	3.2mm	1.8mm
	*** -28N08H15	2.8mm	0.8mm	3.6mm	1.5mm
	*** -30N10H20	3.0mm	1.0mm	4.0mm	2.0mm
	*** -32N12H23	3.2mm	1.2mm	4.0mm	2.3mm
	*** -32N12H28	3.2mm	1.2mm	4.0mm	2.8mm

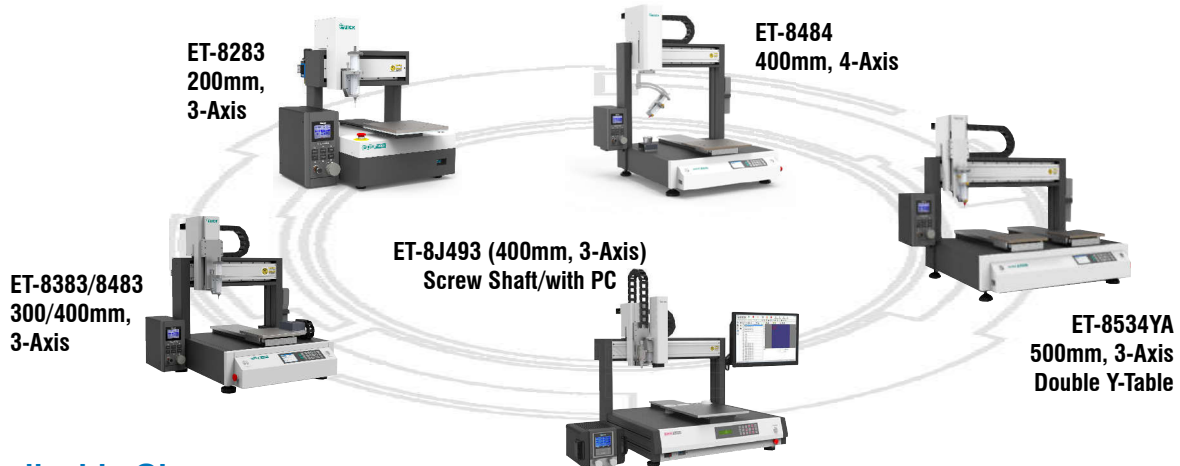
Warranty is 12 months from the date of invoice. It excludes all consumable parts as Heating Elements, Temperature Sensors, Soldering Tips, Cleaning Sponges etc., and any sort of mechanically damaged parts. While the information contained herein in, has been carefully compiled to the best of our knowledge, nothing is intended as representation and warranty on our part; and no statement shall be construed as recommendation to infringe any of existing patents. We accept no liability of whatsoever for any faults and errors in the information contained herein. Contents of this catalogue and specifications of the products, are subject to change without notice due to continuous improvements.

on-site services can be provided at extra charges if pre-paid by customer in advance

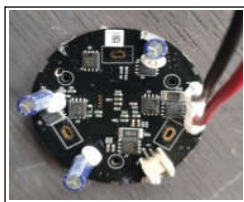
Highly reliable Dispensing Robot for Adhesives, Sealing & Greasing



to automate dispensing materials with higher productivity and consistent repeatability



Applicable Glues



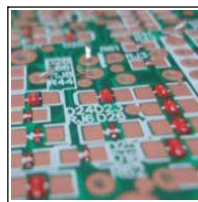
Silicon Gel

Process application: sealing encapsulation, reinforcement
Viscosity: 10000-1000000 CPS



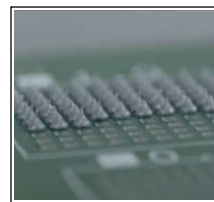
Epoxy Glue

Process application: underfill, potting
Viscosity: 5000-200000 CPS



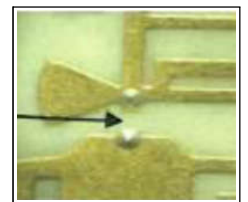
Red Glue

Process application: bonding
Viscosity: 30-450000CPS



Solder Paste

Process application: conductive
Viscosity: 500-40000CPS



Silver Glue

Process application: conductive
Viscosity: 500-40000CPS



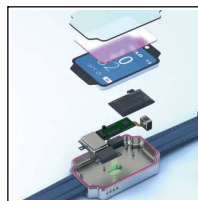
UV Glue

Process application: waterproof, moisture/dust proof
Viscosity: 100-40000 CPS



Thermal Conductive Glue

Process application: heat conduction
Viscosity: 300-50000CPS



Hot Melt Glue

Process application: sealing, bonding
Viscosity: 10000CPS



Instant Glue

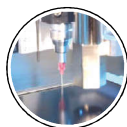
Process application: bonding
Viscosity: 100-4000CPS



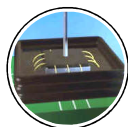
Conformal Coating

Process application: PCB protection
Viscosity: 100 CPS below

Applicable Processes



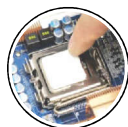
Bonding



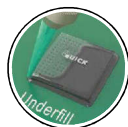
Packaging



Sealing



Heat Conduction



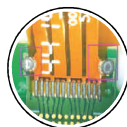
Under Fill



Potting



Reinforcement



Conductive



Conformal Coating

Available Dispensing Valve Options



Suction Valve



Diaphragm Valve



Screw Valve



Pneumatic Jet Valve



AB Glue Valve



Striker Valve



Spray Valve



Gear Valve



Piezoelectric Valve

Warranty is 12 months from the date of invoice. It includes all consumable parts as Nozzles, Barrel etc. and any physically damaged parts.

on-site services can be provided at extra charges if pre-paid by customer in advance

While the information contained herein in, has been carefully compiled to the best of our knowledge, nothing is intended as representation and warranty on our part; and no statement shall be construed as recommendation to infringe any of existing patents. We accept no liability of whatsoever for any faults and errors in the information contained herein. Contents of this catalogue and specifications of the products, are subject to change without notice due to continuous improvements.

to automate dispensing materials with higher productivity and consistent repeatability

BENEFITS

- High Production with minimum workforce
- Virtually zero wastage of dispensing material
- Same consistent & accurate dispensing quality

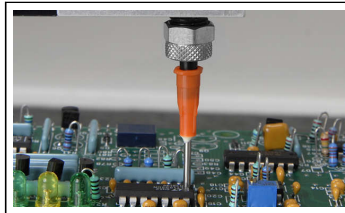
 [Click here to view Video](#)

Scope of Supply:

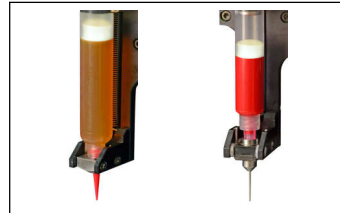
- 3-Axis 200x200 mm Dispensing Robot
- Teaching Pendant with Interface Cord
- Dispensing Controller with Cord
- Nozzles (12 Pcs) • Adaptor • Allen Key Box
- PU tube (8mm dia x 2.5 meter length)
- Dispensing Barrel & Piston • Instruction Manual



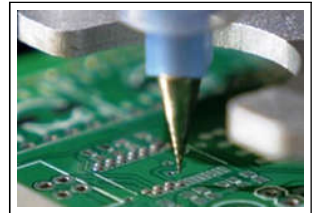
Sealant Dispensing



Conformal Coating Dispensing



Glue & Adhesive Dispensing



Solder Paste Dispensing

This desktop Robot is designed for the automation of dispensing operation to minimize working hands. Besides increasing productivity, it also lowers production cost because there is no wastage of dispensing materials. It is a fully-automatic & high resolution control system with 3 axis movement. This unit also provides easier programming instructions, more parameters, a larger memory space and a higher speed. It increases production rate.

Few supply user references (many with repeat orders) in India for Robotic solutions by Quick

- Precision Electronic Components Mfg. Co., Hyderabad
- Kostal India Private Limited, Vellore (Tamil Nadu)
- Mag Power, Pune
- Sahyadri Udyog, Pune
- Vishal Engineering, Pune (repeat order)
- Intelux Electronics Private Limited
- Reanu Micro Electronics Pvt. Ltd., Pune
- Mindarika Private Limited, Manesar
- Nidec India Private Limited, Neemrana
- muP Electronics, Nashik

Specifications	ET-8283	
Input Supply	100~240V AC, 50 Hz	
Number of Axis	3	
Movement Range 200 x 200 x 50mm	X & Y	200mm
	Z	50mm
Speed Range	X & Y	0.1 ~ 600mm/sec
	Z	0.1 ~ 300mm/sec
Repeat Accuracy	X, Y & Z	±0.01mm
Maximum Payload	Z-Axis	2 kg
	Platform	5 kg
Dimensions (WxDxH)	529 x 483 x 467mm	
Weight (approx.)	23 kg	

Warranty is 12 months from the date of invoice. It excludes all consumable parts as Nozzles, Barrel etc. and any physically damaged parts.

on-site services can be provided at extra charges if pre-paid by customer in advance

While the information contained herein in, has been carefully compiled to the best of our knowledge, nothing is intended as representation and warranty on our part; and no statement shall be construed as recommendation to infringe any of existing patents. We accept no liability of whatsoever for any faults and errors in the information contained herein. Contents of this catalogue and specifications of the products, are subject to change without notice due to continuous improvements.

to automate dispensing materials with higher productivity and consistent repeatability

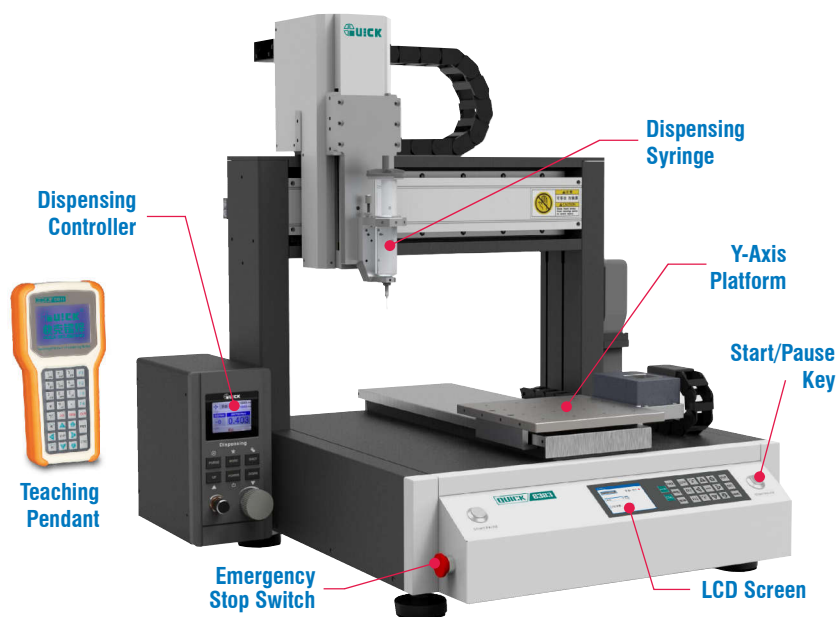
BENEFITS

- High Production with minimum workforce
- Virtually zero wastage of dispensing material
- Same consistent & accurate dispensing quality

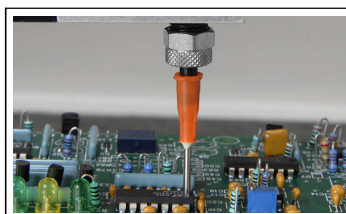
 [Click here to view Video](#)

Scope of Supply:

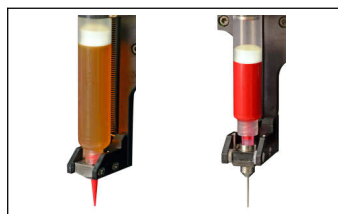
- 3-Axis 300x300 mm Dispensing Robot
- Teaching Pendant with Interface Cord
- Dispensing Controller with Cord
- Nozzles (12 Pcs) • Adaptor • Allen Key Box
- PU tube (8mm dia x 2.5 meter length)
- Dispensing Barrel & Piston • Instruction Manual



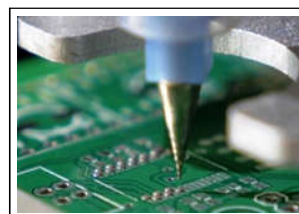
Sealant Dispensing



Conformal Coating Dispensing



Glue & Adhesive Dispensing



Solder Paste Dispensing

This desktop Robot is designed for the automation of dispensing operation to minimize working hands. Besides increasing productivity, it also lowers production cost because there is no wastage of dispensing materials. It is a fully-automatic & high resolution control system with 3 axis movement. This unit also provides easier programming instructions, more parameters, a larger memory space and a higher speed. It increases production rate.

Few supply user references (many with repeat orders) in India for Robotic solutions by Quick

- Precision Electronic Components Mfg. Co., Hyderabad
- Kostal India Private Limited, Vellore (Tamil Nadu)
- Mag Power, Pune
- Sahyadri Udyog, Pune
- Vishal Engineering, Pune (repeat order)
- Intelux Electronics Private Limited
- Reanu Micro Electronics Pvt. Ltd., Pune
- Mindarika Private Limited, Manesar
- Nidec India Private Limited, Neemrana
- muP Electronics, Nashik

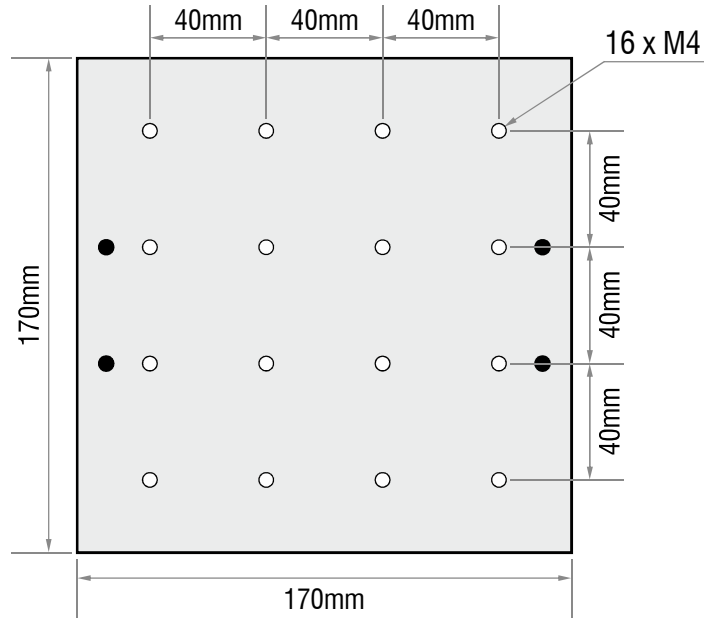
Specifications	ET-8383	
Input Supply	100~240V AC, 50 Hz	
Number of Axis	3	
Movement Range 300 x 300 x 100mm	X & Y	300mm
	Z	100mm
Speed Range	X & Y	0.1 ~ 800mm/sec
	Z	0.1 ~ 300mm/sec
Repeat Accuracy	X, Y & Z	±0.01mm
Maximum Payload	Z-Axis	5 kg
	Platform	8 kg
Dimensions (WxDxH)	610 x 650 x 630mm	
Weight (approx.)	35 kg	

Warranty is 12 months from the date of invoice. It excludes all consumable parts as Nozzles, Barrel etc. and any physically damaged parts.

on-site services can be provided at extra charges if pre-paid by customer in advance

While the information contained herein in, has been carefully compiled to the best of our knowledge, nothing is intended as representation and warranty on our part; and no statement shall be construed as recommendation to infringe any of existing patents. We accept no liability of whatsoever for any faults and errors in the information contained herein. Contents of this catalogue and specifications of the products, are subject to change without notice due to continuous improvements.

Platform Layout of Dispensing Robots to prepare Fixture as per your applications



Partial User References (not complete list) of our Robotic Machine

SNo.	Customer's Name & City	Qty	SNo.	Customer's Name & City	Qty
1	Amphenol, Chennai	8	15	Nokia, Chennai	2
2	BG LI-IN, Aurangabad	1	16	Prama Hikvision India Pvt. Ltd., Pune	9
3	Bharat FIH Limited, Kancheepuram	4	17	Precision Electronics, Hyderabad	1
4	Danlaw Electronics Assembly Ltd., Goa	2	18	Reanu Micro Electronics Pvt. Ltd., Pune	1
5	Flash, Pune	1	19	Rising Stars Mobile (I) Pvt. Ltd., Kancheepuram	5
6	Flexi Efficads Pvt. Ltd., Bangalore	1	20	Sahyadri Udyog, Pune	1
7	Intelux Electronics Pvt. Ltd., Pune	1	21	Schneider Electric India Pvt. Ltd., Bangalore	1
8	Interface, Gurgaon	1	22	Shakti Pumps (I) Ltd., Pithampur	1
9	Kostal India Pvt. Ltd., Vellore	10	23	Sritech Electronics, Bangalore	1
10	Mag Power, Pune	1	24	Sumitron Exports Pvt. Ltd., Delhi	7
11	Minda Stoneridge, Pune (in repeat orders)	12	25	Tymtix, Bangalore	1
12	Mindarika, Gurgaon	1	26	Vijay Electricals, Ahmednagar	1
13	MUP Electronics Nashik	1	27	Vishal Engineering Company, Pune	3
14	Nidec, Neemrana (Japanese MNC)	24			

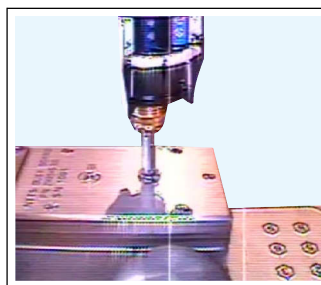
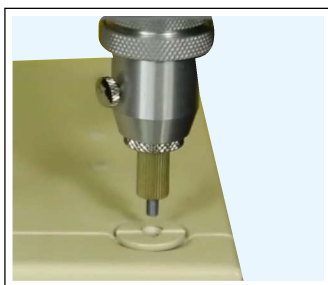
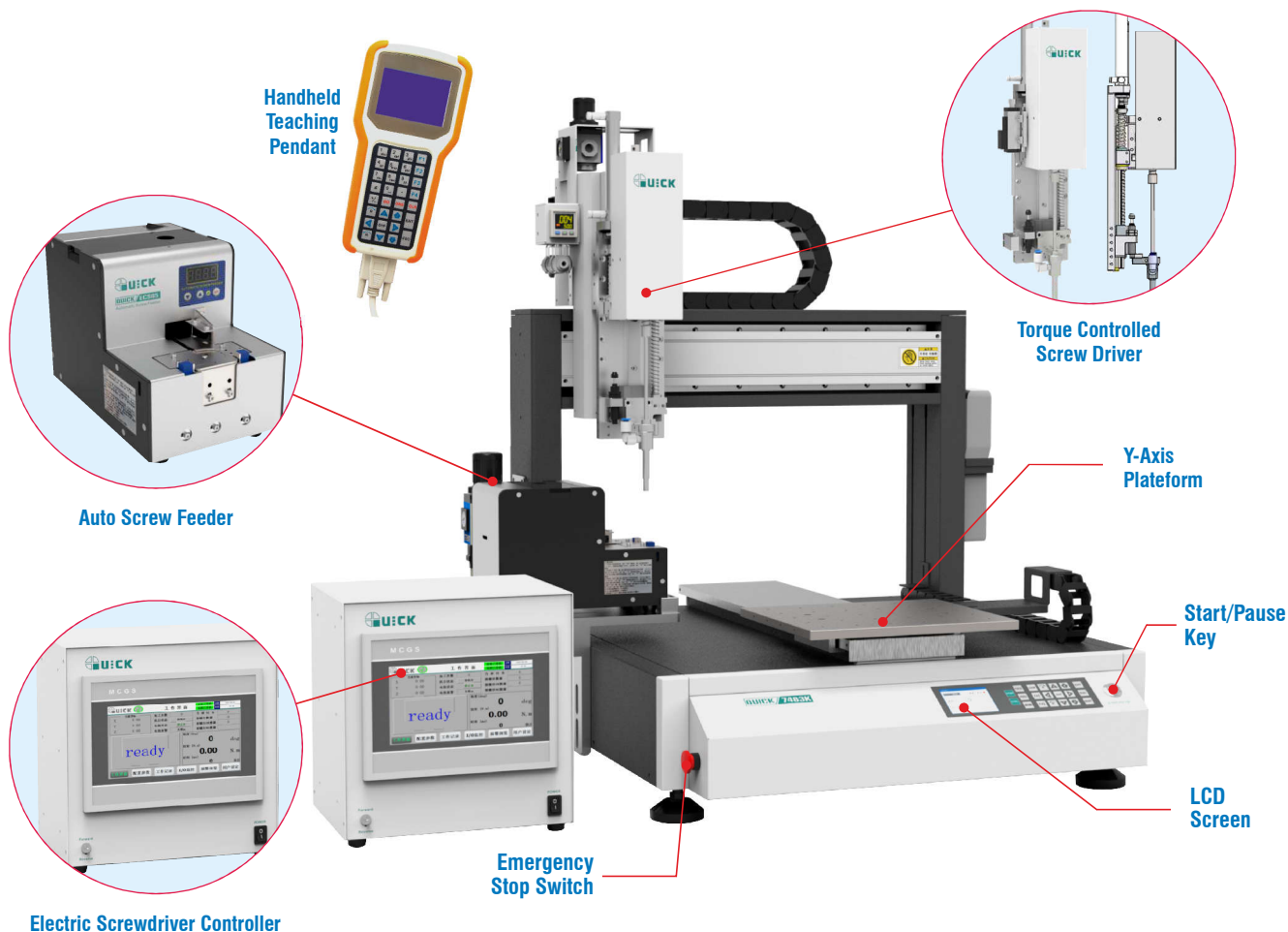
Warranty is 12 months from the date of invoice. It excludes all consumable parts as Nozzles, Barrel etc. and any physically damaged parts.

on-site services can be provided at extra charges if pre-paid by customer in advance

While the information contained herein in, has been carefully compiled to the best of our knowledge, nothing is intended as representation and warranty on our part; and no statement shall be construed as recommendation to infringe any of existing patents. We accept no liability of whatsoever for any faults and errors in the information contained herein. Contents of this catalogue and specifications of the products, are subject to change without notice due to continuous improvements.

Affordably Priced, Highly Reliable & Precise Screw Fastening Robots

Screws feeding with counting at high production rate & also prevents missing of screws



These Desktop Screw Fastening Robots are designed for automation of screw locking process to minimize work force on production line. Besides increasing productivity, without adding working hands, these also provide reliable type consistent screw fastening with same torque.

Features

- Single/Double Head for fast working, greatly improves productivity
- Automatically picks and tightens screws
- Continuous Screw feeding with counting, also prevents missing screws
- Constant torque with screw slip teeth and floating lock detection
- The device has an external job status indicator prompting
- Hand-held programming Pendant

Scope of Supply:

- Main Robotic Unit
- Teaching Pendant
- Auto Screw Feeder
- Electric Screwdriver
- Instruction Manual

Warranty is 12 months from the date of invoice. It excludes all wear & tear type parts and any physically damaged parts.

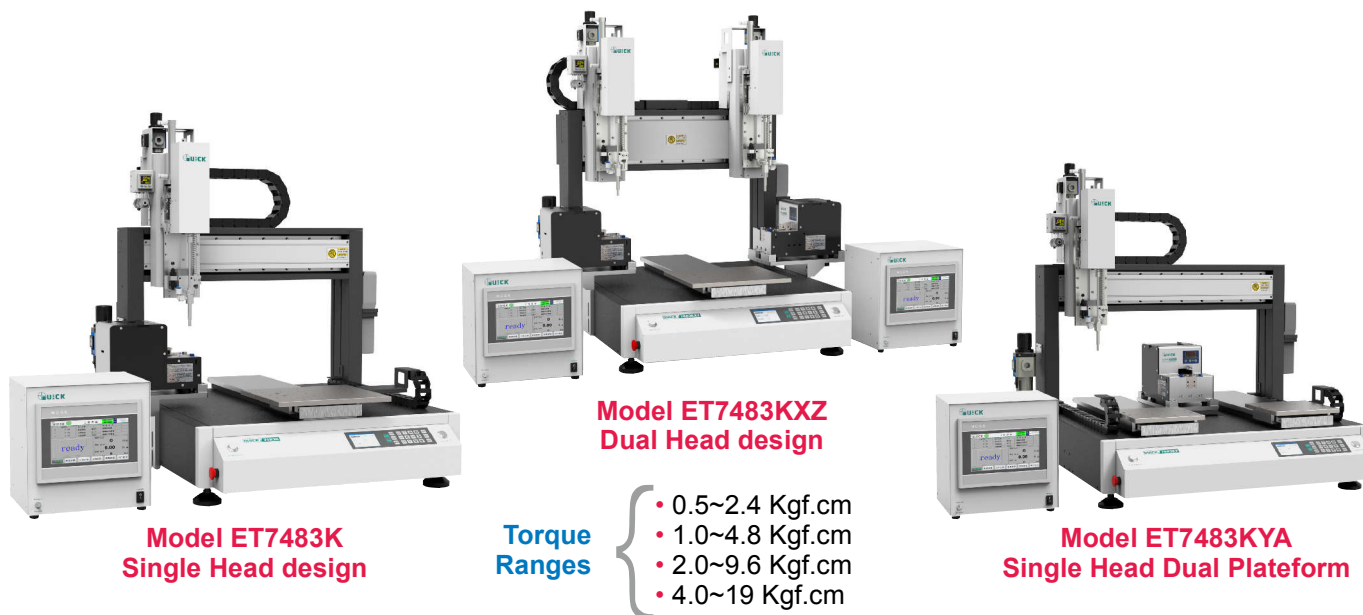
While the information contained herein in, has been carefully compiled to the best of our knowledge, nothing is intended as representation and warranty on our part; and no statement shall be construed as recommendation to infringe any of existing patents. We accept no liability of whatsoever for any faults and errors in the information contained herein. Contents of this catalogue and specifications of the products, are subject to change without notice due to continuous improvements.

on-site services can be provided at extra charges if pre-paid by customer in advance

Affordably Priced, Highly Reliable & Precise Screw Fastening Robots



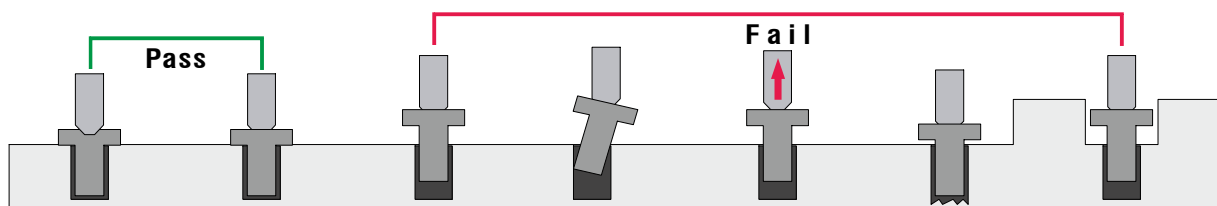
Screws feeding with counting at high production rate & also prevents missing of screws



Specifications:

Specifications	ET7483K	ET7483KXZ	ET7483KYA
Input Supply	100~240V AC, 50 Hz		
Number of Axis	3	3	3
Movement Range	X	400mm	500mm
	Y	400mm	400mm
	Z	100mm	100mm
Speed Range	X	0.1 ~ 1000mm/sec	
	Y	0.1 ~ 1000mm/sec	
	Z	0.1 ~ 300mm/sec	
Repeat Accuracy	X, Y & Z	±0.01mm	
Maximum Payload	Platform	8 kg	
Screw Feeding	Air Suction		
Screwing Range (X/Y)	360 x 370mm	340 x 370mm	170 x 370mm
Suitable for	M1 ~ M5 Screws		
Air Pressure	0.4MPa ~ 0.6MPa		
Dimensions (WxDxH)	750 x 690 x 810mm	810 x 690 x 860mm	820 x 690 x 810mm

Will show pass if screw is fastened correctly otherwise will show as fail



Warranty is 12 months from the date of invoice. It excludes all wear & tear type parts and any physically damaged parts.

on-site services can be provided at extra charges if pre-paid by customer in advance

While the information contained herein in, has been carefully compiled to the best of our knowledge, nothing is intended as representation and warranty on our part; and no statement shall be construed as recommendation to infringe any of existing patents. We accept no liability of whatsoever for any faults and errors in the information contained herein. Contents of this catalogue and specifications of the products, are subject to change without notice due to continuous improvements.

Screws feeding with counting at high production rate & also prevents missing of screws

Electric Screwdriver Controller



Smart Control: 3 ways and 16 lock parameters

Process Monitoring: Real-time lock data like torque profile, real torque value, angle, time and lock result etc. displayed on screen

Smart Detection: Missing lock, Floating lock and thread loose etc. defects can be detected

Data Collection: Real-time data can be controlled in the controller, standard 4G memory can store 4 millions on screw data, torque profile can be saved in USB or PC.

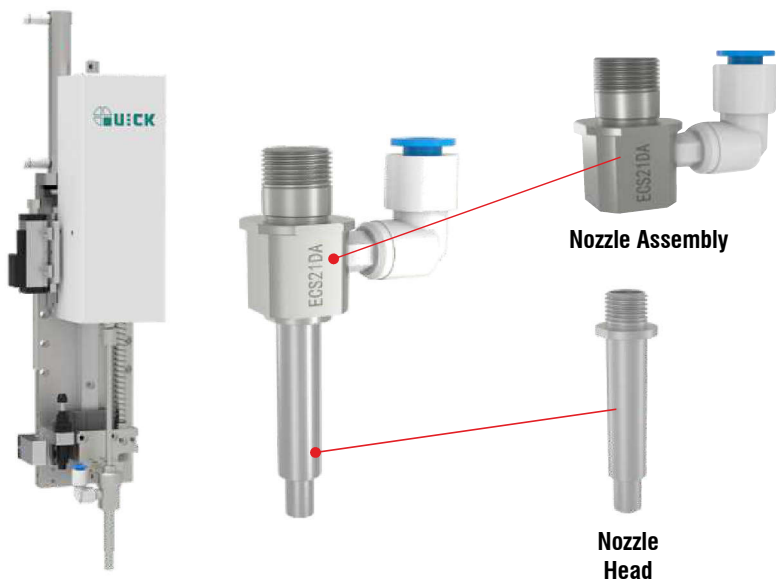
History Tracing: Locking data can be viewed and exported for analysis. It is recommended to use with code scanner

Communication: RS232, RS485, USB and Ethernet available

Specifications of Screwdrivers used in Screw Fastening Robots

Model	Output Torque Range(±5%)			Rotating Speed (r.p.m)	Bit Specifications
	N.m	kgf.cm	lbf.in		
ECS80T-50A	0.05~0.24	0.5~2.4	0.44~2.12	1500	
ECS80T-100A	0.1~0.48	1.0~4.8	0.89~4.25		
ECS80T-200A	0.2~0.96	2.0~9.6	1.77~8.5		
ECS80T-400A	0.4~1.9	4.0~19	3.54~16.82		

Electric Screwdriver Nozzle Assembly



Nozzle Assembly Model	Bit Diameter (mm)
ECS21DA-Z4	Ø4mm
ECS21DA-Z5	Ø5mm

Note: Nozzle Assembly, Nozzle head and bit depend on application

Warranty is 12 months from the date of invoice. It excludes all wear & tear type parts and any physically damaged parts.

While the information contained herein in, has been carefully compiled to the best of our knowledge, nothing is intended as representation and warranty on our part; and no statement shall be construed as recommendation to infringe any of existing patents. We accept no liability of whatsoever for any faults and errors in the information contained herein. Contents of this catalogue and specifications of the products, are subject to change without notice due to continuous improvements.

on-site services can be provided at extra charges if pre-paid by customer in advance

ECS65A Screw Feeder for Screw length upto 15mm



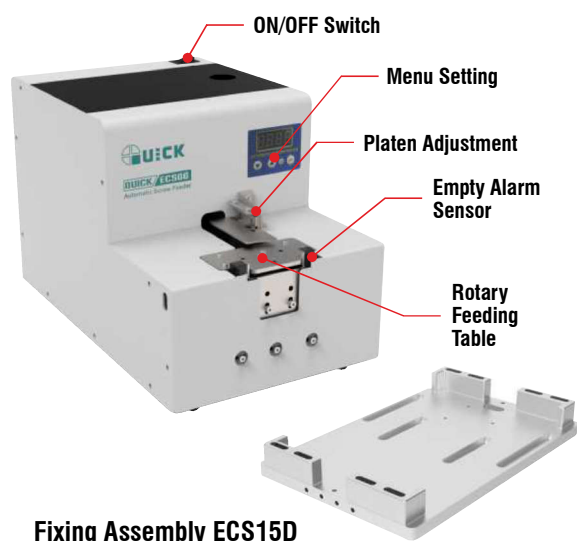
Features:

- Lead rail and rotary feeding table can be adjusted and replaced for screws M1.0 ~ M5.0 with length upto 15mm
- Volume 0.15L, maximum 600 pcs of M3x8 pan-head screws can be put inside
- Reliable screw feeding, feeding speed 50-80 pcs/min
- Precise feeding, repeatability $\pm 0.02\text{mm}$
- Signal output available when screws are ready for auto machines
- Record screw feeding quantity
- Feeding speed and feeding delay are adjustable
- Dimensions (WxDxH): 125 x 202 x 150mm
- Weight: 3.5 kg (approximately)

Specifications:

Model	Input Voltage	Output Voltage	Applicable Screws	Applicable Length	Volume
EC65A	AC100~240V, 50Hz	DC15V/1.5A	M1.0 ~ M5.0	$\leq 15\text{mm}$	0.15L

ECS66A Screw Feeder for Screw length upto 18mm



Features:

- Lead rail and rotary feeding table can be adjusted and replaced for screws M2.0 ~ M6.0 with length upto 18mm
- Volume 0.45L, maximum 1800 pcs of M3x8 pan-head screws can be put inside
- Reliable screw feeding, feeding speed 50-80 pcs/min
- Precise feeding, repeatability $\pm 0.02\text{mm}$
- Signal output available when screws are ready for auto machines
- Record screw feeding quantity
- Feeding speed and feeding delay are adjustable
- Dimensions (WxDxH): 165 x 265 x 180mm
- Weight: 4.8 kg (approximately)

Specifications:

Model	Input Voltage	Output Voltage	Applicable Screws	Applicable Length	Volume
EC66A	AC100~240V, 50Hz	DC15V/1.5A	M2.0 ~ M6.0	$\leq 18\text{mm}$	0.45L

Warranty is 12 months from the date of invoice. It excludes all wear & tear type parts and any physically damaged parts.

on-site services can be provided at extra charges if pre-paid by customer in advance

While the information contained herein in, has been carefully compiled to the best of our knowledge, nothing is intended as representation and warranty on our part; and no statement shall be construed as recommendation to infringe any of existing patents. We accept no liability of whatsoever for any faults and errors in the information contained herein. Contents of this catalogue and specifications of the products, are subject to change without notice due to continuous improvements.