

Partial User References (not complete list) of our Fume Extraction Systems

| SNo. | Customer's Name & City | Qty | SNo. | Customer's Name & City | Qty |
|------|--|-----|------|---|-----|
| 1 | 509 Army Base Workshop, Agra | 28 | 40 | EFD Induction Private Limited | 2 |
| 2 | ABB India Limited, Bangalore | 5 | 41 | Effee Induction Pvt. Ltd., Bangalore | 1 |
| 3 | ABB Limited, Vadodara | 1 | 42 | Effronics Systems Pvt. Ltd., Vijayawada | 28 |
| 4 | ACE Manufacturing Systems Limited, Bangalore | 5 | 43 | Electromags Automotive Products Pvt. Ltd., Chennai | 2 |
| 5 | Adarsh Infrainterio Pvt. Ltd., Mumbai | 5 | 44 | Eletec Engineers, Amabala Cantt | 1 |
| 6 | ADS Sensortechnik Pvt. Ltd., Bangalore | 1 | 45 | Embedded IT Solution (India) Private Limited, Hyderabad | 1 |
| 7 | Air Force Station, Delhi | 1 | 46 | EME Automation | 1 |
| 8 | Airtech Enterprises | 2 | 47 | Epcos India Private Limited, Nashik | 1 |
| 9 | Aluminium Industries Limited, Trivandrum | 8 | 48 | Erhardt + Leimer (India) Pvt. Ltd., Ahmedabad | 1 |
| 10 | Amphenol Omniconnect India Pvt. Ltd., Chennai | 1 | 49 | Flexi Efficads Pvt. Ltd., Bangalore | 1 |
| 11 | Anicad Systems, Bangalore | 1 | 50 | Flextronics Tech (I) Pvt. Ltd., Kanchipuram | 53 |
| 12 | Apex Electronics, Secunderabad | 5 | 51 | Fokker Elmo Sasmos Interconnection Systems Ltd. | 2 |
| 13 | Arya Electronics, Trivandrum | 1 | 52 | Futura Automation Pvt. Ltd., Bangalore | 2 |
| 14 | Astra Microwave Products Ltd., Hyderabad | 14 | 53 | Genus Power Infrastructures Ltd., Guwahati | 3 |
| 15 | AVM Labs Private Limited, Chennai | 3 | 54 | Genus Power Infrastructures Ltd., Jaipur | 42 |
| 16 | Bharat Electronics Limited, Bangalore | 129 | 55 | Goodrich Aerospace Services Pvt. Ltd., Bangalore | 25 |
| 17 | Bharat Electronics Limited, Navi Mumbai | 2 | 56 | Hanoch Automations Pvt. Ltd. | 2 |
| 18 | Bharat Electronics Limited, Pune | 14 | 57 | HELA Systems Pvt. Ltd. | 1 |
| 19 | Bharat Electronics Ltd., Ghaziabad | 6 | 58 | Hella India Automotive Private Ltd., Gurgaon | 1 |
| 20 | Bharat Electronics Ltd., Machilipatnam | 3 | 59 | Himanshu Traders, Kanpur | 2 |
| 21 | Bharathi MRO Industrial Products Pvt. Ltd., Coimbatore | 1 | 60 | Hindustan Aeronautics Ltd., Hyderabad | 16 |
| 22 | Bhavyabhenu Electronics (P) Ltd., Hyderabad | 4 | 61 | Honeywell Technology Solutions Lab Pvt. Ltd., Bangalore | 2 |
| 23 | Blue Chip Electronics, Secunderabad | 33 | 62 | HTL Limited, Chennai | 3 |
| 24 | BPL Medical Technologies Ltd., Kerala | 1 | 63 | IJPN Technologies (I) Pvt. Ltd., Pinjore | 12 |
| 25 | BuffaloGrid Project Private Limited | 1 | 64 | Innovate Software Solutions Pvt. Ltd., Bangalore | 1 |
| 26 | Captronic Systems Pvt. Ltd., Bangalore | 4 | 65 | INTELLIC SYSTEMS | 1 |
| 27 | Centum Electronics Ltd., Bangalore | 4 | 66 | IoTech World Avigation Pvt. Ltd., Gurugram | 1 |
| 28 | GET Power Solutions India Pvt. Ltd., Chennai | 2 | 67 | JAY CEE & Company, New Delhi | 1 |
| 29 | CHARA TECHNOLOGIES | 1 | 68 | Kaynes Technology India Pvt. Ltd., Gurgaon | 1 |
| 30 | Chip Test Engineering Pvt. Ltd., Chennai | 2 | 69 | Keltron Electro Ceramics Ltd., Kerala | 13 |
| 31 | Colloidal Solutions Private Limited, Bengaluru | 1 | 70 | Kent RO Systems Ltd., Noida | 7 |
| 32 | Continental Automotive Components (I) Pvt. Ltd., Bangalore | 1 | 71 | Kerala State Electronics Dev. Corp. Ltd., Karakul | 33 |
| 33 | Cyient DLM Private Limited | 10 | 72 | Konarak Industria Pvt. Ltd., Bangalore | 1 |
| 34 | Danfoss Industries Pvt. Ltd., Chennai | 1 | 73 | Krishan Lal Doomra, Bikaner | 6 |
| 35 | Danlaw Electronics Assembly Limited, Goa | 3 | 74 | Krohne Marshall Pvt. Ltd., Pune | 1 |
| 36 | Denso India Private Limited, Noida | 2 | 75 | L&T Technology Services Limited, Bangalore | 1 |
| 37 | Dhiman Associates, Chandigarh | 1 | 76 | Labsources, Bangalore | 1 |
| 38 | DivineTechno Engineers, Vadodara | 7 | 77 | Lapp India Pvt. Ltd., Vadodara | 1 |
| 39 | Eagle Industries, Rajkot | 1 | 78 | Lapp India Pvt. Ltd., Bangalore | 1 |

Warranty is 12 months from the date of invoice.

It excludes any sort of mechanical damage and all consumable parts as Filters, Extraction Arms and Hoods.

on-site services can be provided at extra charges if pre-paid by customer in advance

While the information contained herein in, has been carefully compiled to the best of our knowledge, nothing is intended as representation and warranty on our part; and no statement shall be construed as recommendation to infringe any of existing patents. We accept no liability of whatsoever for any faults and errors in the information contained herein. Contents of this catalogue and specifications of the products, are subject to change without notice due to continuous improvements.

Partial User References (not complete list) of our Fume Extraction Systems

| SNo. | Customer's Name & City | Qty | SNo. | Customer's Name & City | Qty |
|------|---|-----|------|---|-----|
| 79 | Latecoere India Private Limited, Belgaum | 6 | 118 | Seiko-Maraica Electrical | 1 |
| 80 | Lucas TVS Limited, Pondicherry | 2 | 119 | Semi-Conductor Laboratory, Mohali | 4 |
| 81 | Marathon Electric India Pvt. Limited, Faridabad | 2 | 120 | Shakti Pumps (India) Ltd., Pithampur | 1 |
| 82 | Marquardt India Pvt. Ltd., Pune | 1 | 121 | Shivalik Bimetal Controls Ltd., Solan | 11 |
| 83 | Mediatek India Technologies Pvt. Ltd., Noida | 1 | 122 | Shree Annapurna Enterprises | 1 |
| 84 | Mersen India Private Limited, Bangalore | 21 | 123 | Shriji Metal Industries, Amreli | 1 |
| 85 | Micron Instruments Private Limited, Barwala | 1 | 124 | Siemens Limited., Aurangabad | 1 |
| 86 | Molex India Pvt. Ltd., Bangalore | 15 | 125 | Sinhal Udyog Pvt. Ltd., New Delhi | 2 |
| 87 | Motherson Sumi Systems Ltd., Noida | 3 | 126 | Skipper Limited, Howrah | 1 |
| 88 | Motherson Sumi Wiring India Limited, Kancheepuram | 1 | 127 | SLN Technologies Pvt. Ltd., Bangalore | 1 |
| 89 | MPlastics Toys and Engineering Pvt. Ltd., Krishnagiri | 1 | 128 | Smash Electronics, Pune | 1 |
| 90 | MTE India Private Limited, New Delhi | 1 | 129 | Spaartasoft Technology Solutions, Pune | 3 |
| 91 | Muffaddal Tools & Hardware, Bangalore | 7 | 130 | Sreenivasulu Cherukuru, Sriharikota | 2 |
| 92 | Multilink, Mysore | 8 | 131 | SRIVIDYA CONTROLS, Bangalore | 1 |
| 93 | Narayana Hrudayalaya Limited, Bangalore | 3 | 132 | Stead Fast Engineers Pvt. Ltd., Faridabad | 6 |
| 94 | NEESHU Marking and Coding Pvt. Ltd., Nagpur | 1 | 133 | Stellar Information Technology Pvt. Ltd., Gurugram | 1 |
| 95 | Nucon Aerospace Pvt. Ltd., M.R.R. Distt | 1 | 134 | Success Solutions, Nashik | 1 |
| 96 | Panasonic India Private Ltd., Haryana | 1 | 135 | Sungrow Developers India Private Limited, Bangalore | 1 |
| 97 | Payal Mechanical & Engineering Works, Chandigarh | 14 | 136 | Suprajit Engineering Limited, Bangalore | 1 |
| 98 | PICL India Pvt. Ltd., Faridabad | 5 | 137 | Syrma SGS Technology Ltd., Chennai | 30 |
| 99 | Prism Automation Pvt. Ltd. | 1 | 138 | System Controls Technology | 1 |
| 100 | PVR Controls, Mumbai | 3 | 139 | Tata Advanced Systems Limited, Bangalore | 2 |
| 101 | Quantum SMT Technologies Pvt. Ltd, Gurgaon | 10 | 140 | Tata Power Solar Systems Ltd. | 1 |
| 102 | Rajshree Electro-Systems, Panvel | 6 | 141 | TE Connectivity India Pvt.Ltd., Bangalore | 5 |
| 103 | Rama Exports, Mumbai | 1 | 142 | Titan Company Limited | 1 |
| 104 | Raphe MPhibr Private Limited, Noida | 1 | 143 | Titan Company Ltd, Hosur | 1 |
| 105 | Rapid Global Business Solutions India Private Ltd. | 1 | 144 | Titan Company Ltd., Bangalore | 1 |
| 106 | Rcube Technologies, Noida | 1 | 145 | Toyota Techno Park India Pvt. Ltd., Ramnagar | 1 |
| 107 | REFURB TECH | 1 | 146 | Tractors and Farm Equipment Ltd., Chennai | 2 |
| 108 | RenewSys India Pvt. Ltd, R.R. Distt. | 2 | 147 | Trascon Interconnections Systems Pvt. Ltd., Bangalore | 1 |
| 109 | RHINE POWER PRIVATE LIMITED, Gurugram | 2 | 148 | Urban Engineering Association Pvt. Ltd., Kolkata | 1 |
| 110 | ROSSELL TECHSYS (Div. of Rossel India Ltd), Bangalore | 6 | 149 | Ushodaya Electronics, Hyderabad | 3 |
| 111 | RP Network System, Bangalore | 5 | 150 | Veeyes Electronics Pvt. Ltd., Bangalore | 1 |
| 112 | SAEL Solar MFG Pvt. Ltd., Ferozpur | 2 | 151 | Venimadhav Moolchand Suppliers, Kanpur | 6 |
| 113 | Salzer Electronics Ltd., Coimbatore | 1 | 152 | V-Guard Industries Limited, Cochin | 1 |
| 114 | Samvardhana Motherson International Ltd., Noida | 1 | 153 | Vikram Sarabhai Space Centre, Thiruvananthapuram | 31 |
| 115 | Sasmos HET Technologies Ltd., Bangalore | 9 | 154 | Vilasini Harness Solutions Pvt. Ltd., Mohali | 1 |
| 116 | Schneider Electric India Pvt. Ltd., Bangalore | 1 | 155 | Virtual Forest Private Ltd., Bangalore | 1 |
| 117 | Schneider Electric IT Business, Rudrapur | 2 | 156 | Zones Corporate Solution Pvt. Ltd. | 1 |

Warranty is 12 months from the date of invoice.

It excludes any sort of mechanical damage and all consumable parts as Filters, Extraction Arms and Hoods.

on-site services can be provided at extra charges if pre-paid by customer in advance

While the information contained herein in, has been carefully compiled to the best of our knowledge, nothing is intended as representation and warranty on our part; and no statement shall be construed as recommendation to infringe any of existing patents. We accept no liability of whatsoever for any faults and errors in the information contained herein. Contents of this catalogue and specifications of the products, are subject to change without notice due to continuous improvements.

What's in Soldering Fumes?

The smoke produced while soldering can easily expose one to Hazardous Fumes. Soldering, a process in which heat is used to join two metals together by melting a third metal or solder, produce fumes that can be hazardous to the operators breathing zone.

Metal vapors are formed as solder evaporates and gases are produced as flux evaporates. Metal vapors are released into the air when low melting point alloys are soldered together. Due to rosin fluxes, including resin acid particles, soldering process produces fumes that can cause long-term discomfort & health problems.

The human body exposed to solder fumes directly because the fumes rise vertically during hand soldering practices. Operators are exposed to lead during soldering. If handled incorrectly, lead can cause chronic health effects, such as reproductive problems, digestive problems, memory and concentration problems, and muscle and joint pain.



The health hazards due to common solder components are as below:

Lead: May cause lead poisoning, kidney disease, hypertension, and weight loss. Targets the gastrointestinal tract, nervous system, kidneys and blood. Symptoms include metallic taste in the mouth, nausea, vomiting, headache, cramps, nervousness, and insomnia

Tin: Considered relatively harmless but may generate benign pneumoconiosis, or eye, skin, and respiratory system irritation

Silver: May create throat irritation, blue gray eyes, nasal septum irritation, and gastrointestinal disturbance

Copper: Can produce eye and upper respiratory irritation and metal fume fever. Metal fume fever symptoms include fever, chills, aches, pains, nausea, and dizziness.

That is why you need to come up with a way to eliminate that toxic smoke whenever you are soldering. But here is where the confusion comes in: which one should choose between Fume Extraction System or Fan type Fume Absorber

Which one should you choose between: Fume Extraction System vs Fan type Absorber

The answer to this is simple - Go with the Fume Extraction System. A fan type absorber will just blow around the smoke produced and not filter it completely – You will still breathe the fumes. A Fume Extraction System not only sucks the fumes but it also filters the fumes thus making it an efficient Solder Fume Filtration System. Despite its cost, a soldering Fume Extraction System is way superior and efficient than a soldering fan type absorber.

Filtration Process of Fume Extraction System

Pre-Filter

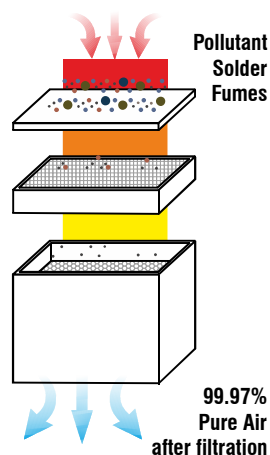
Filter out larger particles of solder fumes

Middle Filter

Filter out coarse particles of solder fumes and also filter out bacteria, fungi etc.

Main HEPA Filter

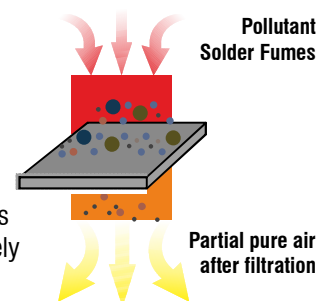
Activated carbon filters and filter out all toxic and harmful gases to make the air pure and free from pollutant



Filtration Process of Fan type Fume Absorber

Carbon Activated Filter

Filter out solder fumes partially not completely



Warranty is 12 months from the date of invoice. It excludes any sort of mechanical damage and all consumable parts as Filters, Extraction Arms and Hoods.

on-site services can be provided at extra charges if pre-paid by customer in advance

While the information contained herein in, has been carefully compiled to the best of our knowledge, nothing is intended as representation and warranty on our part; and no statement shall be construed as recommendation to infringe any of existing patents. We accept no liability of whatsoever for any faults and errors in the information contained herein. Contents of this catalogue and specifications of the products, are subject to change without notice due to continuous improvements.

Couple of 100's (in repeat orders) working reliably all over India for the last many years

3-Stage Filters for 99.97% cleaning
Silent operation with noise < 55 dBA*
Reliable & powerful brushless turbine
Ready-to-use, no plumbing required

[Click here to view Video](#)



FumePRO101
Main
Extraction
Control
Unit

Digital Display Indicator



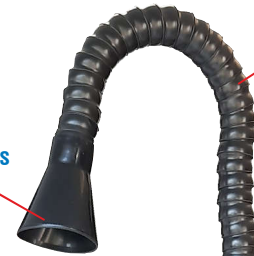
System Choke Alarm:
When display shows circular movement clockwise plus OFF and system beeps, it means any of Filters needs replacement.



Airflow
Setting
Switches

Speed Control
Regulator
Connector

Burn-proof Silicon
Rubber Round Hoods
105mm dia

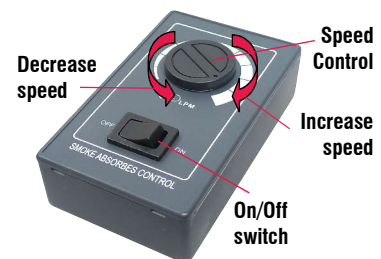
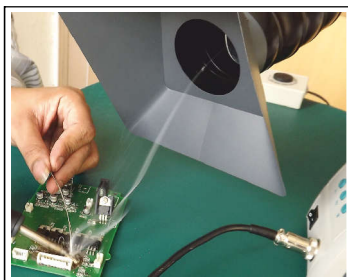


Rigid Gooseneck
Arms can be
positioned
anywhere on
table and will
stay in
same place

No Plumbing required
Just position on the
Table as needed

Ready-to-use
Complete
Package

No Plumbing
required



Speed Control Regulator

Scope of Supply

- 1x FumePro101 Main Extraction Unit
- 1x Extraction Arms (50mm dia, 1 meter long)
- 1x Round Fume Absorbing Hood (105mm dia.)
- 1x Speed Control Regulator
- 2x Spare Pre-Filters

Specifications

- Input Power Supply : 230V/50Hz, 120W
- No of Workplaces : 1
- Stationary Pressure : 2400 Pa
- Maximum Airflow Rate : 120m³/h
- Filtering Efficiency (0.3um) : 99.97%
- Noise Level : <55dB*

* at distance of 1 meter & also at typical speed of turbine

shown trademarks are property of their respective owners.

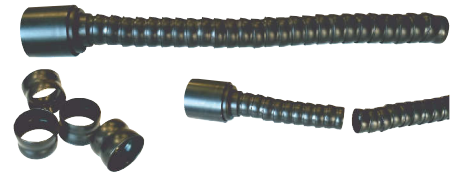
Warranty is 12 months from the date of invoice. It excludes all consumable parts as Filters, Extraction Arms and Hoods

While the information contained herein in, has been carefully compiled to the best of our knowledge, nothing is intended as representation and warranty on our part; and no statement shall be construed as recommendation to infringe any of existing patents. We accept no liability of whatsoever for any faults and errors in the information contained herein. Contents of this catalogue and specifications of the products, are subject to change without notice due to continuous improvements.

Couple of 100's (in repeat orders) working reliably all over India for the last many years

Features

- Hassle-free easy-to-start operation with all inclusive kit supplied
- Easy-to-manoeuvre positioning of Fumes Extraction Arms
- Reliable & virtually maintenance-free Brushless DC Turbine
- Has low noise (< 55 dBA) in operation as compared to other competitor's models
- Special Filters design removes hazardous gaseous/adhesive substances from fumes.
- Normally low cost Pre-Filter only needs periodic replacement when there is choking
- Quick delivery of all spares parts as we keep enough stocks of the same all the time



Length of Extraction Arm is easily adjustable, as this is made from press-fit type small sections which are easily adjustable in length by selection of these sections as per required length.

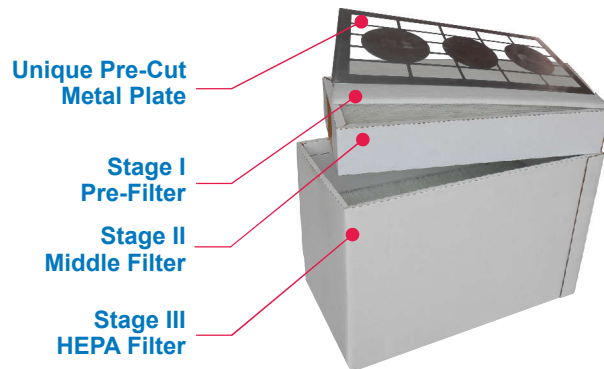
KHRR105-50

Rubber Round Absorber
- 105mm diameter
- ESD Safe & Heat resistant

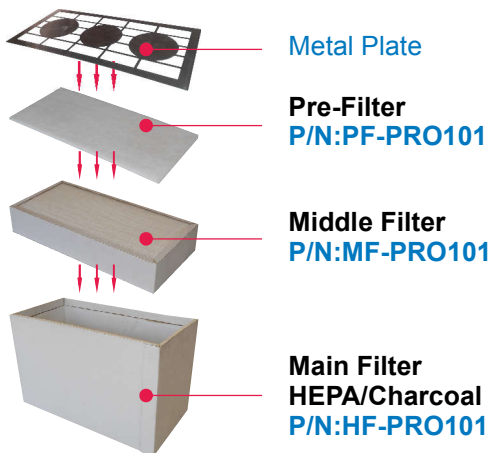


FumePRO101-50LC is a volume extraction type powerful single operator ready-to-use Solder Fume Extraction System. It is designed for continuous and reliable working on production line. Its powerful and maintenance-free brushless turbine combined with electronic speed control, provides clean working environment at low maintenance cost. The electronic Speed Controller regulates air-flow volume continuously.

Ready-to-use Solder Fumes Extraction System Model FumePRO101-50LC is fitted with **3-stage Filters**: Pre-Filter, Middle Filter and HEPA Filter. Combination of these Filters cleans polluted air by separating 99.9% contaminated solder fumes. This System is designed for use both in industrial and laboratory environment. All it needs is the Mains Input Power Supply only.



Details of 3-Stage Filters used in this Fume Extraction System



- **Metal Plate:** Metal Plate on top to increase the life of Filters
- **Stage I Pre-Filter (F7):** The Pre-Filter filters the bigger size particles for prolonging the life of both Middle and Main Filters.
- **Stage II Middle Filter:** It filters coarse size fume particles to prolong life of expensive HEPA/Charcoal Filter
- **Stage III Main HEPA/Charcoal Filter (H13):** This Filter is a combination of HEPA (filters fine size fume particles) and Activated Charcoal (absorbs harmful gas substances) Filters to provide clean air finally.

1. Normally Pre-Filter only needs periodic replacement when there is less suction of fumes.
2. These Filters should never be washed nor should be cleaned with compressed air at all.

shown trademarks are property of their respective owners. Warranty is 12 months from the date of invoice. It excludes all consumable parts as Filters, Extraction Arms and Hoods While the information contained herein in, has been carefully compiled to the best of our knowledge, nothing is intended as representation and warranty on our part; and no statement shall be construed as recommendation to infringe any of existing patents. We accept no liability of whatsoever for any faults and errors in the information contained herein. Contents of this catalogue and specifications of the products, are subject to change without notice due to continuous improvements.