

## ESD Safe Dehumidifying Dry Storage Cabinet Model SFDC870-160-4

**INDE**  
reliable & caring since 1976

**SUPER FAST** to achieve set RH level • **HIGHLY Stable** to set as low as 1%RH

**New generation technology of Dessicator based, internal embedded software automatically switches number of Dessicators as required to achieve very fast set %RH level and maintains the same RH level with high stability**

**ESD Safe Dehumidifying Dry Storage Cabinet for Moisture Sensitive expensive IC Packages, Assembled & Bare Printed Circuit Boards, Lithium-ion Batteries, Silicon Wafers, Ceramic Substrates and Solar Cells**

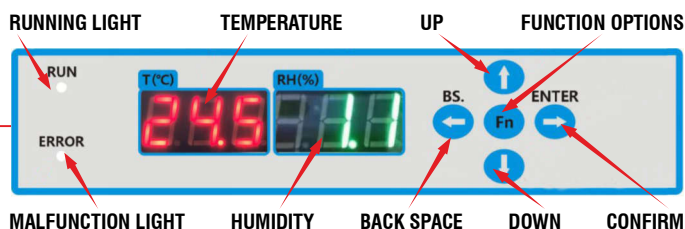
**Humidity range conforms to IPC/JEDEC J-STD 033C Standards for storing even expensive IC packages**



Reliable Rugged Handles  
with Key Locks

### Salient Features

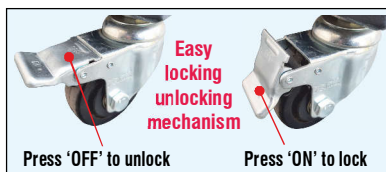
- Dries out all stored components, PCBs and other articles to desired %RH level
- Absolutely maintenance-free
- Low running costs - does not require any sort of consumable materials
- 6 storage compartments with 5 height adjustable shelves



Digital Control Panel to Set the desired parameters like Humidity level etc. Thermo-Hygrometer with accuracy  $\pm 3\%RH^*$



Fully ESD Safe Cabinet provides safe storage of static sensitive devices



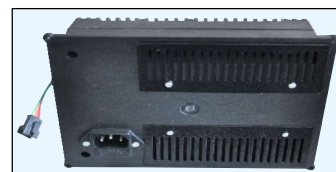
360° rotatable ESD Safe Heavy Duty Castor Wheels Front 2 Castor Wheels are lockable



ESD Safe Glass windows with magnetic sealing doors.



Wrist Strap Terminals for additional ESD Safety



3 Powerful Desiccators ensure faster dehumidification upto set RH level

### Specifications:

Humidity Range	: 1% ~ 60%RH
Display Resolution	: 0.1%RH ; 0.1°C
External Dimensions	: 900W x 600D x 1890H mm approx.
Material	: 1mm Steel with ESD Black Paint
Number of Doors	: 4 Doors with common lock keys
Number of Shelves	: 5 adjustable (for up/down) Shelves each shelf can bear 80kg load
Input Supply	: 220V ~ 240V, 50Hz
Power Consumption	: 30 Watt (Avg); 520 Watt (Max.)

### Features:

- Effective Storage Capacity: 870 litres (approx.)
- ESD Safe Toughened Glass Windows
- Digital Display for Temperature and Humidity
- Heavy Duty Zinc Alloy Locks
- Humidity Controller maintains stable RH Level
- Accuracy:  $\pm 3\%RH$  (It is not  $\pm 3\%$ )\*

\* If the set humidity is 10%RH. Then the actual value will be within 7%RH & 13%RH. If it is set at 25%RH then actual value will be within 22%RH & 28%RH.

on-site services can be provided at extra charges if pre-paid by customer in advance

Warranty is 1 years from the date of invoice. It excludes any mechanically damaged part.

While the information contained herein in, has been carefully compiled to the best of our knowledge, nothing is intended as representation and warranty on our part; and no statement shall be construed as recommendation to infringe any of existing patents. We accept no liability of whatsoever for any faults and errors in the information contained herein. Contents of this catalogue and specifications of the products, are subject to change without notice due to continuous improvements.