

Cold Roll Steel Dry Humidity Storage Cabinets with Datalogger

ESD Safe, PC Datalogging & Alarm available, 1~10%, 1~50% & 20~60%RH ranges

Humidity range conforms to IPC/JEDEC J-STD 033C Standards for storing even expensive IC packages



Specifications:

- LED Display for temperature and humidity
- Humidity Controller maintains stable constant humidity
- Input Supply: 220V ~ 240V, 50Hz
- The error of humidity value is $\pm 3\%RH$ (It is not $\pm 3\%$)*

* Assume the set point of humidity is 10%RH. Then the actual value will be within 7%RH and 13%RH. If set point is 18%RH then actual value will be within 15%RH and 21%RH.

Features:

- Made from Cold Roll Steel with black paint ESD Coating
- Tampered Toughened Glass Windows
- ESD Safe Castors Wheels



Optional LED Display for Alarm



INFCDE-100E

Internal Dimensions
W398 x D375 x H685mm



INFCDE-320E

Internal Dimensions
W898 x D420 x H910mm



INFCDE-540E

Internal Dimensions
W598 x D720 x H1318mm



INFCDE-1260E

Internal Dimensions
W1175 x D635 x H1695mm



INFCDE-1428-6E

Internal Dimensions
W1198 x D680 x H1840mm

shown trademarks are property of their respective owners.

Warranty is 12 months from the date of invoice. It excludes any mechanically damaged part.

While the information contained herein in, has been carefully compiled to the best of our knowledge, nothing is intended as representation and warranty on our part; and no statement shall be construed as recommendation to infringe any of existing patents. We accept no liability of whatsoever for any faults and errors in the information contained herein. Contents of this catalogue and specifications of the products, are subject to change without notice due to continuous improvements.

ESD Safe Dry Storage Cabinets for Electronics (Need Electric Supply only)

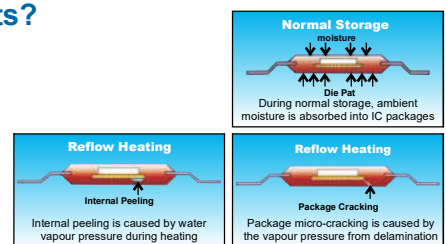
Model No.	RH Range	Capacity (Liters)	External Size WxDxH (mm)	Internal Size WxDxH (mm)	Power Avg. (W)	Shelves Doors
INFCM-60E INFCDE-60E	20 ~ 60% 1 ~ 10%	60	400x400x475	398x375x400	6.5	1 shelf 1 door
INFCM-100E INFCDE-100E	20 ~ 60% 1 ~ 10%	115	400x400x760	398x375x685	6.5	2 shelves 1 door
INFCM-160E INFCDE-160E	20 ~ 60% 1 ~ 10%	160	450x450x1010	448x420x910	20	3 shelves 1 door
INFCM-240E INFCDE-240E	20 ~ 60% 1 ~ 10%	240	600x400x1250	598x370x1150	22	3 shelves 2 door
INFCM-320E INFCDE-320E	20 ~ 60% 1 ~ 10%	320	900x450x1030	898x420x910	26	3 shelves 2 door
INFCM-540E INFCDE-540E-50 INFCDE-540E	20 ~ 60% 1 ~ 50% 1 ~ 10%	540	600x750x1500	598x720x1318	47	3 shelves 2 door
INFCM-728E INFCDE-728E-50 INFCDE-728E	20 ~ 60% 1 ~ 50% 1 ~ 10%	728	600x710x1940	598x680x1840	47	5 shelves 3 door
INFCM-1260E INFCDE-1260E-50 INFCDE-1260E	20 ~ 60% 1 ~ 50% 1 ~ 10%	1260	1210x660x1860	1175x635x1695	47	5 shelves 6 door
INFCM-1428-6E INFCDE-1428E-50 INFCDE-1428-6E	20 ~ 60% 1 ~ 50% 1 ~ 10%	1428	1200x710x1940	1198x680x1840	47	5 shelves 6 door

ESD Safe Nitrogen Port Dry Storage Cabinets for Electronics (Need External Nitrogen)

Model No.	RH Range	Capacity (Liters)	External Size WxDxH (mm)	Internal Size WxDxH (mm)	Power Avg. (W)	Shelves Doors
INDG-540E-N2	1 ~ 60%	540	600x750x1500	598x720x1318	47	3S / 2D
INDG-728E-N2	1 ~ 60%	728	600x710x1940	598x680x1840	47	5S / 3D
INDG-1260E-N2	1 ~ 60%	1260	1210x660x1860	1175x635x1695	47	5S / 6D
INDG-1428-6E-N2	1 ~ 60%	1428	1200x710x1940	1198x680x1840	47	5S / 6D

Why to use ESD Safe & Ultra Low Humidity Dry Storage Cabinets?

The on-going ultra miniaturization in electronics field, is resulting into expensive large size ICs which are not only static charge sensitive but are also moisture sensitive. Such devices needs higher level of moisture control as otherwise they will have internal damage during the reflow process because of moisture expansion. Major failure reason is the rapid heating of the moisture absorbed within the plastic encapsulant of such ICs. The prevention lies in storing in such ICs in ESD Safe and Ultra Low Humidity Dry Storage Cabinets.



shown trademarks are property of their respective owners.

Warranty is 12 months from the date of invoice. It excludes any mechanically damaged part.

While the information contained herein in, has been carefully compiled to the best of our knowledge, nothing is intended as representation and warranty on our part; and no statement shall be construed as recommendation to infringe any of existing patents. We accept no liability of whatsoever for any faults and errors in the information contained herein. Contents of this catalogue and specifications of the products, are subject to change without notice due to continuous improvements.

Optional Door Alarm Module and Data Logging Accessories

Optional Door Alarm Module

This Module can be installed on top of the Humidity Cabinet to monitor the humidity inside the cabinet and to alert the user for any change in humidity value.

This Module is programmable for upper and lower limit of humidity. Once the humidity inside the cabinet increases or decreases from this programmed limit, the alarm will start with beep sound.

Example: The set value in the cabinet is 30% RH. The Alarm Module is programmed for +/- 5%RH. Then if the value of humidity inside the cabinet increases beyond 35%RH then the alarm start ringing. Accordingly if the humidity inside the cabinet decreases beyond 25%RH then the alarm start ringing.

If the door is opened for long time, the humidity value increases from the set upper limit - the alarm start ringing



Optional Data Logger with PC Interface & Software

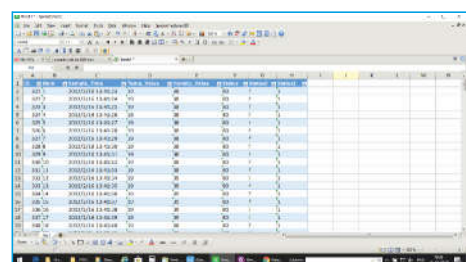
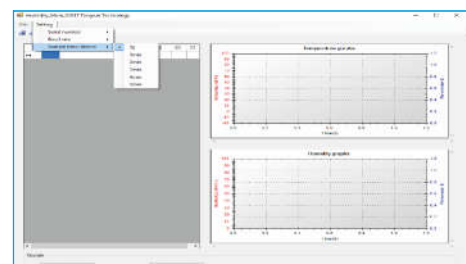
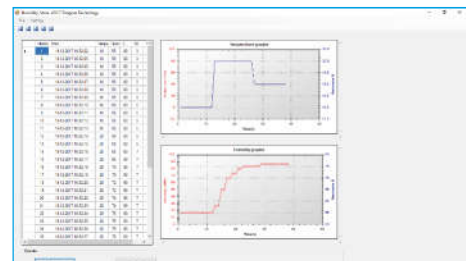
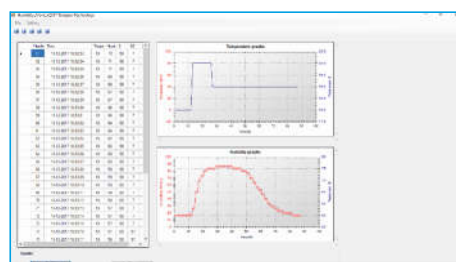
The humidity and temperature inside the cabinet is monitored on a computer using this optionally available Data-logger.

For this Datalogging the hardware is fitted on the Dry Cabinet. This hardware allows the Dry Cabinet to be connected to a PC thru a connecting cable (RS232 to USB).

The software provided allows the capturing and saving the data on a computer.

Capturing time intervals is programmable. It can be programmed for 1 second, 1, 2, 3, 4, & 5 minutes.

The data is displayed on the monitor in tabular form as well as in graphical form. This data is captured and automatically saved in the computer. This data can be viewed in excel sheets for further analysis.



shown trademarks are property of their respective owners.

Warranty is 12 months from the date of invoice. It excludes any mechanically damaged part.

While the information contained herein in, has been carefully compiled to the best of our knowledge, nothing is intended as representation and warranty on our part; and no statement shall be construed as recommendation to infringe any of existing patents. We accept no liability of whatsoever for any faults and errors in the information contained herein. Contents of this catalogue and specifications of the products, are subject to change without notice due to continuous improvements.