

These Desktop Screw Fastening Robots are designed for automation of screw locking process to minimize work force on production line. Besides increasing productivity, without adding working hands, these also provide reliable type consistent screw fastening with same torque.

Features

- Single/Double Head for fast working, greatly improves productivity
- Automatically picks and tightens screws
- Continuous Screw feeding with counting, also prevents missing screws
- Constant torque with screw slip teeth and floating lock detection
- The device has an external job status indicator prompting
- Hand-held programming Pendant

Scope of Supply:

- Main Robotic Unit
- Teaching Pendant
- Auto Screw Feeder
- Electric Screwdriver
- Allen Key Box
- Instruction Manual

shown trademarks are property of their respective owners.

Warranty is 12 months from the date of invoice, excludes bits, screwdriver gears and any other physically damaged part.

While the information contained herein in, has been carefully compiled to the best of our knowledge, nothing is intended as representation and warranty on our part; and no statement shall be construed as recommendation to infringe any of existing patents. We accept no liability of whatsoever for any faults and errors in the information contained herein. Contents of this catalogue and specifications of the products, are subject to change without notice due to continuous improvements.



Model EC413
Single Head design



Model EC423
Double Head design

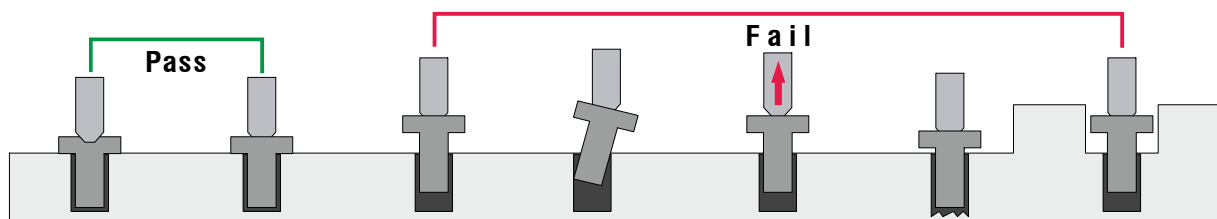


Model EC513YA
Double Y Axis Design
independently controlled

Specifications:

Model		EC413	EC423	EC513YA
Input Supply		100 ~ 240V AC, 50 Hz		
Power Consumption		150W	250W	200W
Number of Axis		3	5	4
Movement Range	X	400mm	400mm	500mm
	Y	400mm	400mm	500mm
	Z	100mm	100mm	100mm
Movement Speed	X	0.1 ~ 600 mm/sec		
	Y	0.1 ~ 600 mm/sec		
	Z	0.1 ~ 300 mm/sec		
Repeat Accuracy	X	±0.02 mm		
	Y			
	Z			
Suitable for		1.6 ~ 3.0(mm) Screws		
Dimensions (approx)		750Wx720Dx815H mm	835Wx720Dx815H mm	830Wx700Dx800H mm
Weight		About120Kg	About 123Kg	About 130Kg

Will show pass if screw is fastened correctly otherwise will show as fail



shown trademarks are property of their respective owners.

Warranty is 12 months from the date of invoice, excludes bits, screwdriver gears and any other physically damaged part.

While the information contained herein in, has been carefully compiled to the best of our knowledge, nothing is intended as representation and warranty on our part; and no statement shall be construed as recommendation to infringe any of existing patents. We accept no liability of whatsoever for any faults and errors in the information contained herein. Contents of this catalogue and specifications of the products, are subject to change without notice due to continuous improvements.

Specifications of Screwdrivers used in Screw Fastening Robots

Model		CL-2000	CL-3000	CL-4000	CL-6500	CL-7000
Output Torque Range	N.m	0.02~0.2	0.03~0.2	0.1~0.55	0.3~1.6	0.3~2.5
	lbf.in	0.17~1.7	0.3~1.7	0.9~4.8	2.6~14	2.6~22
	(kgf.cm)	(0.2~2)	(0.3~2)	(1~5.5)	(3~16)	(3~25)
Torque Setting		Stepless	Stepless	Stepless	Stepless	Stepless
Rotating Speed (no load) (r.p.m)±10%	HI	680	1000	1000	900	750
	LOW	490	670	690	600	500
Screw Size (mm)	Small Screw	1.0~2.3	1.0~2.0	1.4~2.6	2.0~4.0	2.0~5.0
	Tap Screw	1.0~2.0	1.0~1.7	1.4~2.3	2.0~3.0	2.0~4.0

The Screwdriver and Controller with functions like torque test, counter and alarm etc. are available optionally.

Air Blow type

- Precise torque, stable and reliable, compact and light
- Brushless Motor
- Low DC design, safe to use
- Screw height test feature
- Air blow type saves the feeding time to improve the working efficiency



Air Suction type

- Low vibration, low noise
- Precise torque force, long life
- Applicable for wide range of screwing applications



Highly reliable Power Supply

- Special Power Supply with stable output
- High power: 250W



Screw Feeder for the Air Blow type

- Fast material feeding, only 1.2s for two screws which can be ready, individual use available
- Friendly-use interface, easy operation, more functions included:
 - Parameter setup
 - Mode setup
 - Alarm setup
- Compact design, suitable for use in the assembly line.
- Low noise, smooth and stable screw feeding
- Types of screws applicable: M2-M6 screw sizes



Auto Screw Feeder

- Large capacity, low noise, smooth and stable screw feeding
- Applicable for screw sizes: M1.4 ~ M5
- Turntable positioning, feeding fast and accurate, suitable for auto picking up
- Easy and convenient parameter setup



shown trademarks are property of their respective owners.

Warranty is 12 months from the date of invoice, excludes bits, screwdriver gears and any other physically damaged part.

While the information contained herein in, has been carefully compiled to the best of our knowledge, nothing is intended as representation and warranty on our part; and no statement shall be construed as recommendation to infringe any of existing patents. We accept no liability of whatsoever for any faults and errors in the information contained herein. Contents of this catalogue and specifications of the products, are subject to change without notice due to continuous improvements.