

Optical Grade Glass Lens avoids stress to user's eyes for long period working

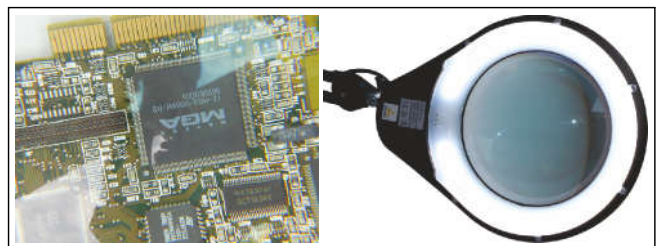
7 inch diameter Extra Wide View Lens
Fully ESD Safe against static charges

Model IML7WLSA-ESD



Features:

- Optical White Glass lens does not strain user's eyes
- Real ESD Safe design for static-free working
- Magnification 5X diopter avoids strain on eyes (higher magnification makes user uncomfortable)
- Very wide view Lens size of 180mm (7 inch) diameter
- LED Light Source is longer lasting (not like CFL Tube type which need replacement periodically)
- Flip Cover protects Lens from dust when not in use
- Operates on Mains input supply of 220~240V, 50 Hz



Non-reflecting LED light cover for inspection of shiny surfaces

Why LED types are preferred over CFL types ?

Type	Lifetime (hours) approx.	Power Consumed	Light Quality	Heat Generation	Toxic Mercury	ON/OFF Switching Cycles	Maintenance Running Cost
LED	>30000	6-8 Watt	Stable and Flicker-free	Virtually zero	Nil	Has No Effect	Virtually zero
CFL	8000	22 Watt	Unstable Flickering	High	Yes	Yes, it can reduce lifespan drastically	Need periodic replacement, also very fragile

Warranty is 12 months from the date of invoice. It excludes any physically damaged parts.

shown trademarks are property of their respective owners.

While the information contained herein in, has been carefully compiled to the best of our knowledge, nothing is intended as representation and warranty on our part; and no statement shall be construed as recommendation to infringe any of existing patents. We accept no liability of whatsoever for any faults and errors in the information contained herein. Contents of this catalogue and specifications of the products, are subject to change without notice due to continuous improvements.

ESD Safe design with 3-wires Mains Supply Table Clamp type

LED Illuminated QC Magnifier

Model ICMESDO

- Magnification: 5 diopter
- Lens size: 125mm (5 inch) dia.
- Lens material: Optical Grade Glass
- Light Source: SMD LEDs
- Input Supply: 220~240 V, 50 Hz
- Body Colour: Black
- Mounting: Table clamp



Long life cool LED light

5X Magnification



Lower priced ESD Safe, Table Clamp type

LED Illuminated QC Magnifier

Model I228L-ESD

- Real ESD Safe design for static-free working
 - Magnification: 3 diopter
- Lens size: 125mm (5 inch) dia.
 - Light Source: SMD LEDs
 - Lens material: Glass
- Input Supply: 220~240V, 50 Hz
 - Body Colour: Black
- Mounting: Table clamp



Long life cool LED lighting

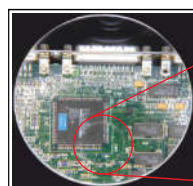


3X Magnification

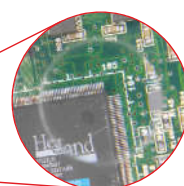
ESD Safe Portable & Light Weight LED Illuminated QC Magnifier

Model ITMESD-1706

- Magnification: 3X (normal lens) and 12X (in embedded Lens)
- Lens Material: Glass
- 100mm (4 inch) Lens dia.
- Input Supply: 230V, 50 Hz
- Body Colour: ESD Safe Black
- Light Source: SMD LEDs
- Table Top type



3 diopter



12 diopter



Table Clamp type LED Illuminated QC Magnifier

Model I228L

- Magnification: 3 diopter
- Lens size: 125mm (5 inch) dia.
 - Light Source: SMD LEDs
 - Lens material: Glass
- Input Supply: 220~240 V, 50 Hz
 - Body Colour: White
- Mounting: Table clamp



Long life cool LED light



3X Magnification