

## ESD Safe design with 3-wires Mains Supply Table Clamp type

### LED Illuminated QC Magnifier

#### Model ICNESDO-5

- Magnification: 5 diopter
- Lens size: 125mm (5 inch) dia.
- Lens material: Optical Grade Glass
- Light Source: SMD LEDs
- Input Supply: 220~240 V, 50 Hz
- Body Colour: Black
- Mounting: Table clamp



## Lower priced ESD Safe, Table Clamp type

### LED Illuminated QC Magnifier

#### Model I228L-ESD

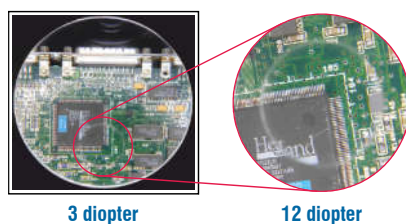
- Real ESD Safe design for static-free working
  - Magnification: 3 diopter
- Lens size: 125mm (5 inch) dia.
  - Light Source: SMD LEDs
    - Lens material: Glass
- Input Supply: 220~240V, 50 Hz
  - Body Colour: Black
- Mounting: Table clamp



## ESD Safe Portable & Light Weight LED Illuminated QC Magnifier

#### Model ITMESD-1706

- Magnification: 3X (normal lens) and 12X (in embedded Lens)
- Lens Material: Glass
- 100mm (4 inch) Lens dia.
- Input Supply: 230V, 50 Hz
- Body Colour: ESD Safe Black
- Light Source: SMD LEDs
- Table Top type



## Table Clamp type LED Illuminated QC Magnifier

#### Model I228L

- Magnification: 3 diopter
- Lens size: 125mm (5 inch) dia.
  - Light Source: SMD LEDs
    - Lens material: Glass
- Input Supply: 220~240 V, 50 Hz
  - Body Colour: White
- Mounting: Table clamp



shown trademarks are property of their respective owners.

Warranty is 12 months from the date of invoice. It excludes any physically damaged parts.

While the information contained herein in, has been carefully compiled to the best of our knowledge, nothing is intended as representation and warranty on our part; and no statement shall be construed as recommendation to infringe any of existing patents. We accept no liability of whatsoever for any faults and errors in the information contained herein. Contents of this catalogue and specifications of the products, are subject to change without notice due to continuous improvements.