

Walking Test Kit, includes:

a WT5000 electrometer, A/D converter with software, hand-held probe, connecting cables, conductive carrying case, user's instruction in German and English and calibration certificate. The graph of the body voltage measurement will be displayed „online“ on the connected PC or LAPTOP.

Electrometer WT5000:

- Test range: ± 5.000 volts or ± 500 volts
- Accuracy: 5% of measured value
- Input resistance: $> 10^{14}$ ohm
- Input capacitance: < 5 pFarad

- Display: Logarithmic LED-display ± 500 volts, changeable to ± 5.000 volts, Peak hold
- Output: Analog ± 5 volts for each test range
- Operation: Rechargeable batteries (battery charger included)

Complies with IEC 61340-4-5



Includes:

- Electrometer WT5000
- A/D converter UAD1 with USB connector
- Data acquisition and analysis software "Digilloscope" for Windows®
- Handheld probe
- Teflon® insulated cable
- 4 NiMH rechargeable batteries
- Charger
- Conductive carrying case

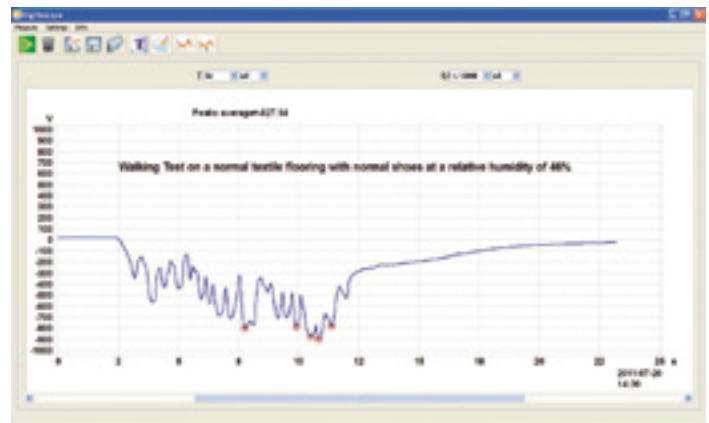
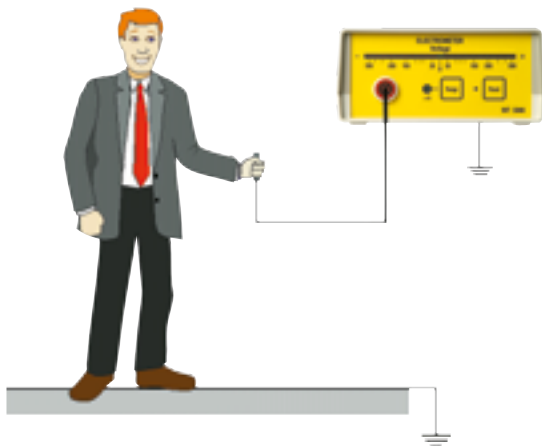


Product link

Part Nr.

7100.WT5000.B Walking Test Kit - USB-Version

WALKING TEST BODY VOLTAGE MEASUREMENT



Body voltage measurement test set-up. The new software "Digilloscope" can mark the five highest peaks automatically and calculates the average value.

ANALOG/DIGITAL CONVERTER

The UAD1 can be used with the following instruments:

- WT5000 (see above)
- ESVM1000 and ESVM2000 (see page 80)
- includes Data acquisition and analysis software "Digilloscope" for Windows®



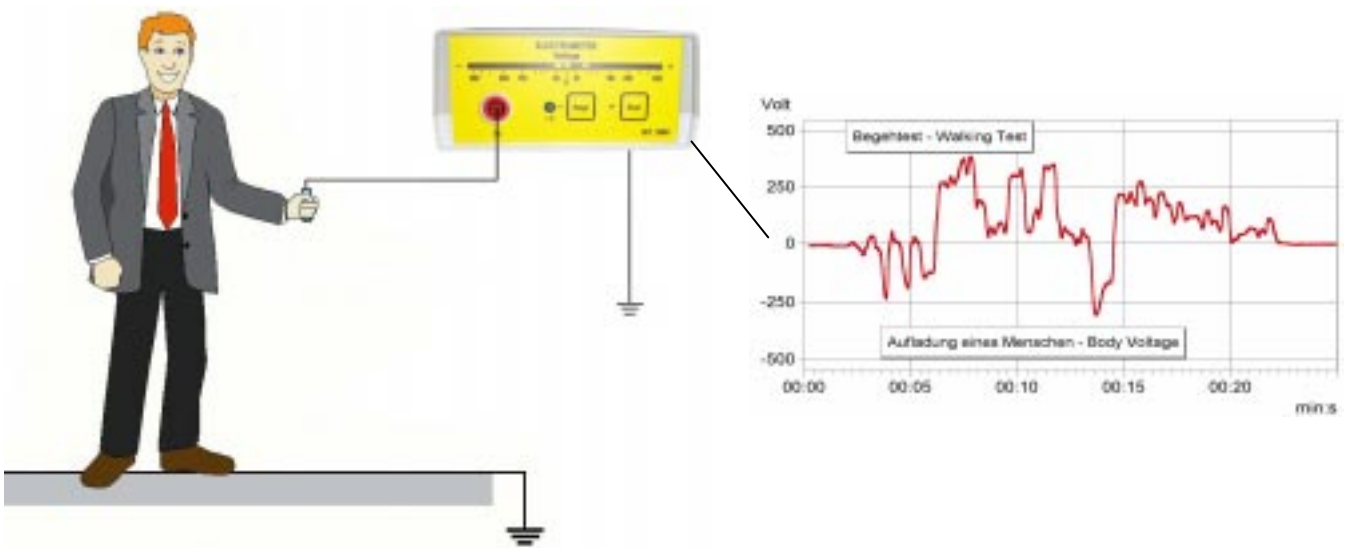
Part Nr.

7100.UAD1 Analog/Digital converter with USB connector - UAD1

User's Manual

Walking Test Kit

7100.WT5000



Wolfgang Warmbier
Untere Gießwiesen 21
D-78247
Hilzingen/Germany
www.warmbier.com

Table of contents

| | |
|---|----------|
| Overview | 2 |
| Technical data | 3 |
| Operation | 3 |
| ■ Controls and displays | 3 |
| ■ Function keys | 4 |
| ■ "Peak Hold" function..... | 4 |
| ■ Measuring range..... | 4 |
| Trouble Shooting | 4 |
| ■ Only a horizontal line is visible after starting the measurement..... | 4 |
| ■ Your computer does not have the parallel port to insert the A/D-Converter | 4 |
| Maintenance | 5 |
| ■ Battery charging and replacement | 5 |
| ■ Zero adjust..... | 5 |
| ■ Warranty | 5 |
| Notice | 5 |
| Calibration | 5 |
| Preparation | 6 |
| ■ Connecting the components..... | 6 |
| ■ Software installation | 6 |
| ■ Setup | 6 |
| Measurement | 7 |
| ■ Measuring..... | 7 |

Overview

The Walking Test Kit described below, is used to monitor the body voltage on a person. The voltage is taken from the electrometer through the A/D-converter and displayed on a PC or a laptop.

The kit consists of:

- Electrometer WT5000
- Analog/Digital-Converter Pico 42M
- Data acquisition and analysis software PicoScope
- Handheld probe
- Connecting cable and plugs
- Conductive carrying case

Technical data

Electrometer

| | |
|---------------------|---|
| Dimensions: | 190 x 148 x 67 mm (L x W x H) |
| Weight: | ca. 500g |
| Input voltage: | $\pm 500V / \pm 5000V$ |
| Input impedance: | $> 10^{14} \Omega$ |
| Input capacity: | $< 5 \text{ pF}$ |
| Response time: | $\leq 10 \text{ ms}$ |
| Output: | Analog $\pm 5V$ |
| Display: | 21-digit logarithmic LED display with "Peak Hold" |
| Power supply: | 4 pcs. NiMH rechargeable batteries (AA) |
| Operating time: | 4 to 6 hours |
| Charger: | 7,5V DC, 300 mA |
| Ranges: | $\pm 500V, \pm 5000V$ |
| Accuracy: | $< 5\%$ |
| Battery monitoring: | audible |

A/D-Wandler

| | |
|---------------------|--|
| Input impedance: | 1 M Ω |
| Interface: | Parallel printer port, (USB with optional adapter) |
| Input voltage: | $\pm 5V \text{ DC}$ |
| Resolution: | 12 Bit |
| Max. sampling rate: | 15 kHz |
| Power supply: | via printer port |

Operation

■ Controls and displays



Front side

- (1) Measurement input
- (2) Input range indicator LED x10
- (3) Input range selector
- (4) Trimmer for zero adjustment
- (5) "Peak Hold" reset button
- (6) 21-digit logarithmic LED display

Back side

- (7) On-/off button
- (8) Power supply socket for the charger
- (9) Grounding socket
- (10) Analog output (BNC socket) - Analog signal for the A/D-converter

■ Function keys

- On/Off (7)** Button to switch the instrument on and off.
 A beep signal sounds on power on.
 When not used, the instrument switches off automatically after 15 minutes.
- Range (3)** Selects input range $\pm 500\text{V}$ or $\pm 5000\text{V}$. The higher range is indicated by the green "x10" LED
- Reset (5)** Resets the "Peak Hold" display

■ "Peak Hold" function

The last measured positive and negative peak value is held on the LED display until it is reset with the "Reset" button.

■ Measuring range

The two measuring ranges can be switched with the "Range" button.
 When switched on, the instrument's range is $\pm 500\text{V}$. Pressing the "Range" button will switch to $\pm 5000\text{V}$.
 The according range is displayed by the green x10 LED.

Changing the range will also change the output resolution of the analog output. This has to be taken into account during measurement.

| <i>Range</i> | <i>Output</i> | <i>Multiplier</i> |
|--------------------|-----------------|-------------------|
| $\pm 500\text{V}$ | $\pm 5\text{V}$ | 100 |
| $\pm 5000\text{V}$ | $\pm 5\text{V}$ | 1000 |

Trouble Shooting

■ Only a horizontal line is visible after starting the measurement.

For proper A/D-Converter operation the Parallel port of the computers BIOS must be set to **Normal**, **Unidirectional** or **SPP**. Please check the BIOS setting.

To enter the BIOS setup press and hold one of the keys DEL, F1 or F2 Taste while switching the computer on.

■ Your computer does not have the parallel port to insert the A/D-Converter

You can use the optional available **USB to Parallel Converter** Part No. 7100.WT5000.USB to connect the A/D-Converter to the USB-Port.

Maintenance

■ Battery charging and replacement

An audible signal indicates a battery low state. Plug in the power supply to charge the battery when necessary. The battery is located inside the battery compartment underneath the instrument.

Only NiMH rechargeable batteries Type (AA) are allowed for this instrument!

■ Zero adjust

Zero adjusting is normally not necessary. If the unit does not indicate 0V while the input is connected to ground, the zero adjustment trimmer (4) can be used to for adjustment.

■ Warranty

Warranty does not include the NiMH rechargeable battery, damage of the battery due to drain, and mechanical damage of the instrument.

The warranty is void if the unit was opened.

Notice

- **This instrument is not approved for measurements in explosion hazard areas.**
- The electrometer must always be grounded during measurement.
- Using the instrument in power plants is not permitted.
- The electrometer is not equipped to detect alternating fields > 100 Hz.

Calibration

The recommended calibration interval is 2 years.

Preparation

For data acquisition and storage the PicoScope software has to be installed on a Computer with Windows operating system and the A/D-converter must be connected to the parallel port.

■ Connecting the components

1. Plug the A/D-converter into the 25-pin D-SUB socket of your computer's printer interface LPT1.
2. Connect the A/D-converter to the electrometer using the BNC-cable.
3. Connect the earth terminal of the electrometer to earth using the crocodile clip of the grounding cord.
4. Connect the handheld probe to the electrometer using the Teflon-insulated wire.
5. Charge the battery of the electrometer with the external power supply if required.



Note:

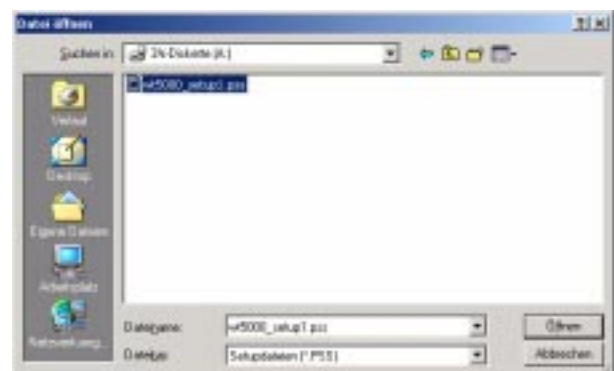
The computer must be connected with the electrometer during the whole measurement.

■ Software installation

- ◆ Run the installation program **webpsw32.exe** on the enclosed CD-ROM. If your operating system is Windows NT, XP or 2000 you must run the setup program as administrator.
- ◆ After selecting your language you have to confirm the license agreement and select a path for installation.
- ◆ After that you are asked to select your **Operating System**, the **Product ADC-42** and port **LPT1**.
- ◆ The software group **PicoScope** should be checked. After specifying a program group the installation is completed. You must **restart** your computer before running the program.

■ Setup

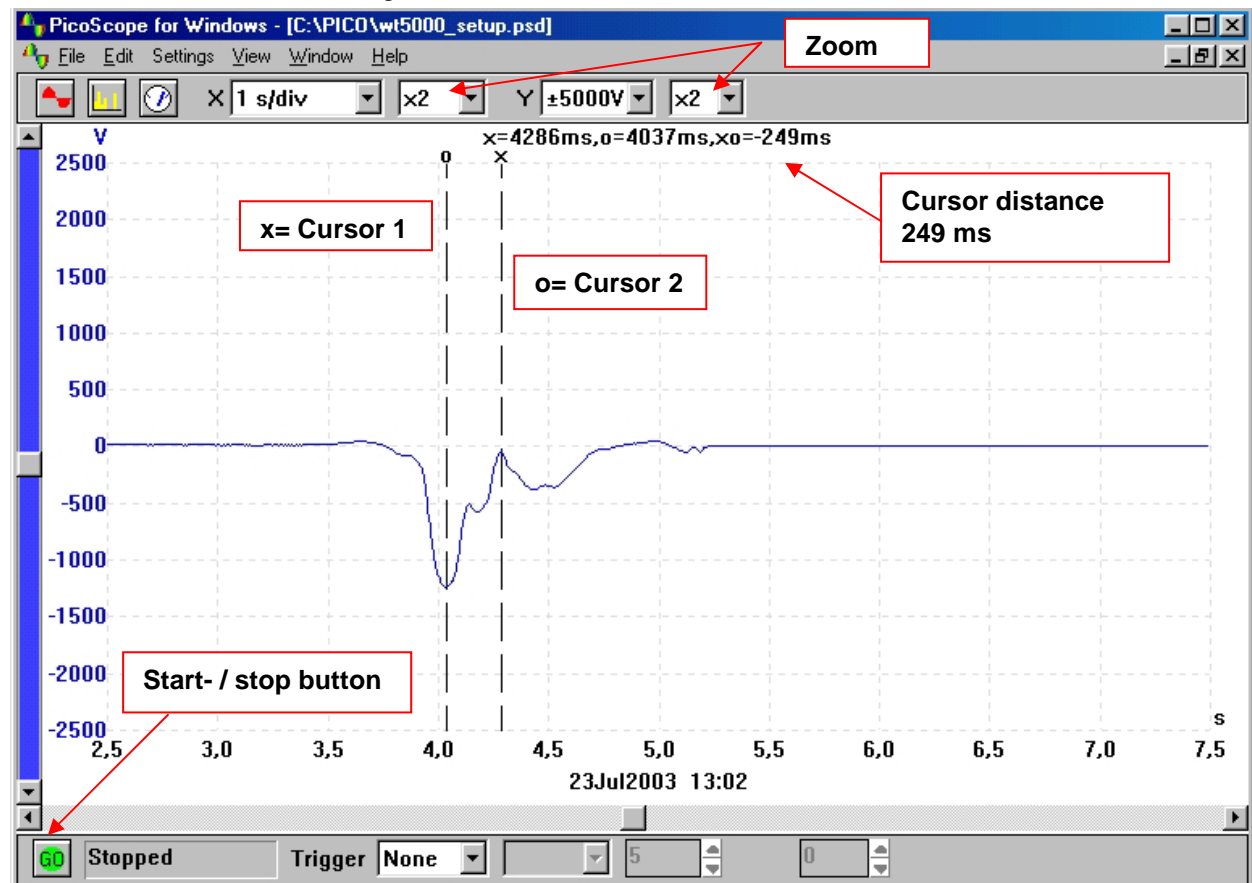
- ◆ Run the **PicoScope** program and load the initial setup file with **File - Open**.
- ◆ Select the CD-ROM drive and open the file **wt5000_setup.psd**.
- ◆ To store the settings permanently, select **File - Safe Settings**.



Measurement

Measuring

- ◆ Set the X-Scaling to **1s/Unit**
- ◆ Set the Y-Scaling to either **± 5000V** or **± 500V** appropriate to the setting of the Electrometer.
- ◆ Start measurement with the green GO-button in the lower left corner of the window.



- ◆ Perform the Walking Test and stop measurement afterwards with the red STOP button. The measurement data is rolling continuously on the screen during measurement.
- ◆ Move the cursors as shown in the picture to measure the curve. Drawing a vertical or horizontal line at the appropriate position will set a cursor.
- ◆ Store the measurement with **File - Save**. Choose Drive «C:», file-type «Data Files (PSD)» and enter a filename.
- ◆ Copy the graph to the clipboard using **Edit - Copy as Graph** to insert it into other applications.

