

# Integrated SMD/PTH Soldering Package, SMDSOL-2021-PK1

All-in-1 package contains all essential tools & accessories for SMD/PTH Soldering



## SMDSOL-2021-PK1 Integrated Package Includes:



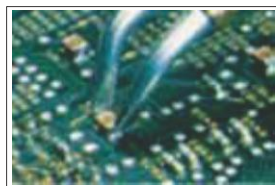
- All inclusive package, no hassles for customer
- Developed from best of breed tools & accessories

- Covers SMD/PTH soldering & SMD desoldering
- Ideal for service centers, Labs

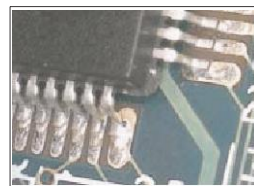
## SMDSOL-2021-PK1 Integrated Package Covers:



SMD ICs soldering



SMD Chip Components desoldering



Visual Inspection



Fume Extraction

shown trademarks are property of their respective owners.

While the information contained herein in, has been carefully compiled to the best of our knowledge, nothing is intended as representation and warranty on our part; and no statement shall be construed as recommendation to infringe any of existing patents. We accept no liability of whatsoever for any faults and errors in the information contained herein. Contents of this catalogue and specifications of the products, are subject to change without notice due to continuous improvements.

All-in-1 package contains all essential tools & accessories for SMD/PTH Soldering



**Weller**<sup>®</sup>  
Made in Germany



**Model WX2021 consists of:**

- WX2 Power & Control Unit
- WXMP Soldering Pencil with RT3 Soldering Tip
- WDH51 Support Rack with Dry Cleaner
- WXMT Micro Thermal Tweezer with RTW2 Inset Set
- WDH60 Support Rack with Dry Cleaner

**Technical Data**

- Temperature Range : 50°C - 550°C (Tool dependent)
- Temperature Accuracy : ± 9°C
- Temperature Stability : ± 2°C
- Digital Display : Set & Actual temperatures
- Input Supply : 230VAC, 50Hz, 200 Watt
- Housing Material : Aluminium base with ESD coating  
Antistatic plastic housing
- Panel Material : Antistatic coated real glass

**Special Features:**

- Stand-By Temperature Setting
- Automatic Switch-Off Time
- Temperature Difference Offset
- Multilingual Menu Navigation
- Graphic Display with Backlight
- Complete Unit is ESD Safe

**Various Soldering Tips & Inset Sets for Micro Desoldering Tweezer**

	RT 1 Needle Tip 0.2mm
	RT 4 Chisel Soldering Tip 1.5mm
	RT 5 Bent Soldering Tip 0.8mm
	RT 8 Chisel Soldering Tip 2.2mm

	RTW 1 Tipset 0.4mm
	RTW 2 Tipset 0.7mm
	RTW 3 Tipset 3.0mm
	RTW 4 Tipset 6.0mm

**Quick Interchange of Tips**



**Quick Interchange of Inserts**



shown trademarks are property of their respective owners.

While the information contained herein in, has been carefully compiled to the best of our knowledge, nothing is intended as representation and warranty on our part; and no statement shall be construed as recommendation to infringe any of existing patents. We accept no liability of whatsoever for any faults and errors in the information contained herein. Contents of this catalogue and specifications of the products, are subject to change without notice due to continuous improvements.

All-in-1 package contains all essential tools & accessories for SMD/PTH Soldering

## Soldering Accessories and Tools in Package

<b>Tip Activator</b> P/N: 51303199 De-oxidation of black tips 	<b>Solder Wire Stand</b> for easy dispensing of solder wire 	<b>Flux/Alcohol Dispensing Bottles</b> Model ESD-DB-180 Model MS-035 	<b>Soldering Aid Kit</b> Model GSR-107 
<b>PLCC Extractor</b> 	<b>Flux Pen</b> 	<b>Solder Wire Roll</b> 	<b>Desoldering Wick</b> PCB Pad Preparation 

## Electronics Workbench Accessories and Tools in Package

<b>ESD Mat Kit</b> 60cm X 120cms size Model 8BM-612A 	<b>Precision Cutter</b> Heavy duty type Model HT-222 Precision Cutter 	<b>ESD Safe Cleaning Brushes</b> ESD-A2 & ESD-E2 
<b>ESD Safe Soft Tip Tweezer</b> Model ESD-259AX 	<b>Superfine curved Tweezer</b> Model 7-SA used with hot air gun for SMD removal 	<b>SMD Tweezer for Chip Chips</b> Model 102-SA 

### Vacuum Pick-up Pen Electrically-operated Model IVS-381

- ESD safe design
- Light-weight
- Adjustable vacuum upto 225mmHg
- Picks & places SMD chips, SOICs, QFPs



### Visual Inspection Magnifiers in Package

#### Portable & Light Weight Illuminated Magnifier

#### Model IM-2012LED

- Magnification: 3X
- Flip down cover
- 100mm dia (4 inch) Glass Lens
- Input Supply: 230VAC, 50Hz
- Body Colour: Black



### Fume Extraction Systems in the Package

#### Table Top Solder Fume Absorber Model I493

- Removes noxious fumes quickly
  - Adjustable angle
- Portable and light weight
  - Replaceable filters
  - Input: 220VAC, 50Hz
  - Power: 20 watts
- Absorption: 0.93~1.07m<sup>3</sup>/min



shown trademarks are property of their respective owners.

While the information contained herein in, has been carefully compiled to the best of our knowledge, nothing is intended as representation and warranty on our part; and no statement shall be construed as recommendation to infringe any of existing patents. We accept no liability of whatsoever for any faults and errors in the information contained herein. Contents of this catalogue and specifications of the products, are subject to change without notice due to continuous improvements.