

Computer shown is not a part of supply.
Choose model with suffix 'Lap' for Laptop

Various Interchangeable Lenses

Features:

- Stereo zoom Microscope allows continuous magnification with clear images throughout the zoom range.
- Clear stereo images, wide field of view, long working distance
- Applications: Viewing/measuring electronics PCB's, microelectronics, metal surfaces etc.
- Ease of use: load the software, plug-in camera into USB Port of Computer. Start taking hi-magnification images and videos.
- Incorporates a reduction lens for highly realistic image (no-over-magnification)
- Live full motion digital video capturing
- Hi-resolution 1280 x 960 pixel digital images
- Camera with features like auto gain control, exposure control, auto white balance control

Features:

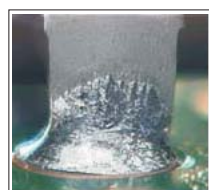
- Fully packaged solution with all system elements configured to work with each other including Stereo Zoom Microscope, Camera, Measurement Software, Illumination, Cables
- USB2.0 for Computer connection

Special Features:

- Magnification Range: 5x ~ 202x
- Precision rack and pinion steel gears for focus movement
- In-built illumination with intensity control
- Long focus adjustment : 90mm
- Diopter adjustment on both ocular to correct for users eye-vision
- Interpupillary distance: 55~75mm



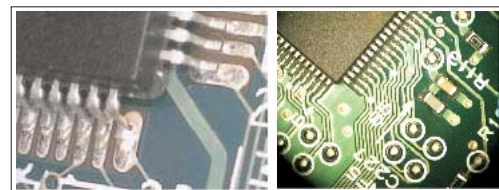
Microwave Bare Chip Bonding Inspection



SMD Pad Solder Lift off Inspection



Leadfree Solder Joint Inspection



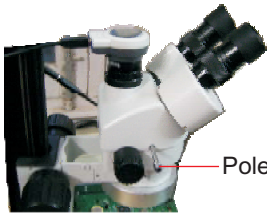
Soldering QC inspection of Quad Flat Pack on Surface Mount type Printed Circuit Board

shown trademarks are property of their respective owners.

While the information contained herein in, has been carefully compiled to the best of our knowledge, nothing is intended as representation and warranty on our part; and no statement shall be construed as recommendation to infringe any of existing patents. We accept no liability of whatsoever for any faults and errors in the information contained herein. Contents of this catalogue and specifications of the products, are subject to change without notice due to continuous improvements.

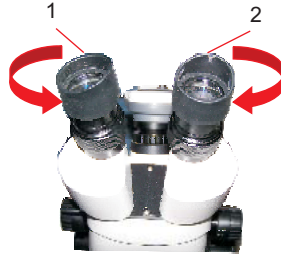
integrates Hi-Class Stereo Zoom viewing and a Hi-resolution Video imaging

Features of Stereo Zoom-Cum-Video Microscope VideoMagPRO series



Switch between Video and Eyepiece View

User can alternate the eyepiece observation and video capture by pushing or pulling the pole.



Independent Diopter Adjustment for each ocular

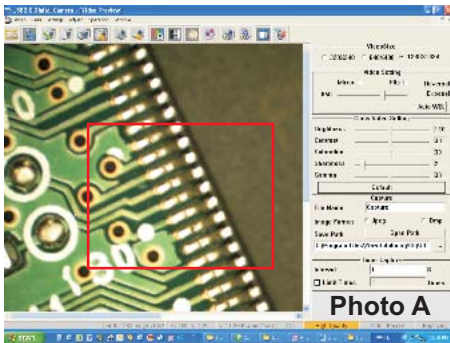
± 5 diopter, provided on both ocular to correct for specific eye-vision of users



Adjust Interpupillary Distance

Interpupillary distance can be adjusted for each user as per his choice

AO Function: AO provides the user with the function of high-speed sectional and consecutive video display in real time. Users can select a section and display it at high speed of 25 frames or more per second so that video looks continuous and smooth. Photo A & Photo B show this below.



AO →

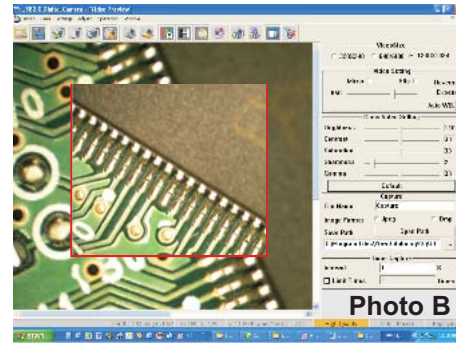
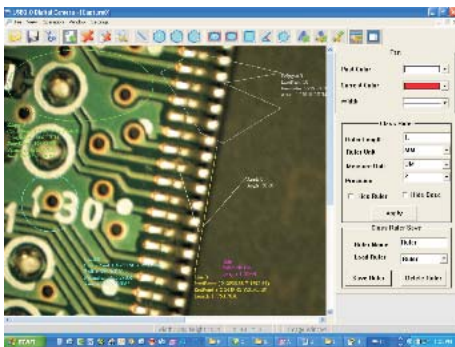


Image Capture: 3 means available

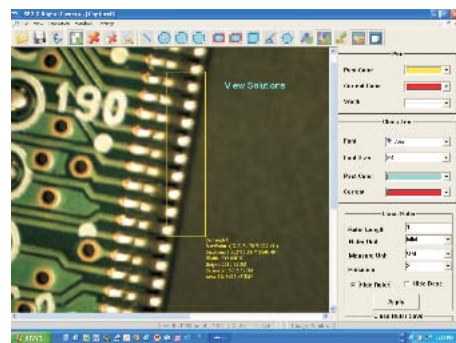
- Capture single image and save it to disk.
- Capture a single image and enter measurement interface.
- Time Capture

Dynamic Depth of Field: Thick objects with multiple layers can be observed by means of dynamic depth of field. Start recording the video. User can adjust focusing knob to change the focal point of image among various depths. 5 second later recording will be concluded and this video will be automatically replayed.



Measurement Feature

This software can measure figures like “beeline”, “circle”, “ellipse”, “quadrangle”, “angle” and “polygon” in the image.



Text Annotation

shown trademarks are property of their respective owners.

While the information contained herein in, has been carefully compiled to the best of our knowledge, nothing is intended as representation and warranty on our part; and no statement shall be construed as recommendation to infringe any of existing patents. We accept no liability of whatsoever for any faults and errors in the information contained herein. Contents of this catalogue and specifications of the products, are subject to change without notice due to continuous improvements.

Selection Chart of Various Available Models

Models	Magnification	Camera output	Scope of Supply							
			Stereo microscope	Stand	Software	Top & Bottom Illumination	Total Lenses	X-Y Stage	LCD Monitor	Laptop
VideoMagPRO-ST	5 ~ 202x	USB	✓	Track, Fine focus, 460mm travel	✓	✓	5	✓	X	X
VideoMagPRO-ST-LAP	5 ~ 202x	USB	✓	Track, Fine focus, 460mm travel	✓	✓	5	✓	X	✓
VideoMagPRO-STMON-LAP	5 ~ 202x	USB+VGA	✓	Track, Fine focus, 460mm travel	✓	✓	5	✓	✓	✓
VideoMagPRO-ST-LC	10.1 ~ 135x	USB	✓	Track, Coarse focus, 250mm travel	✓	X	3	X	X	X

**Model VideoMagPRO-ST
Scope of Supply**

- Stereo Zoom Microscope
- Precision tracking, fine focus Stand , 460mm travel
- 1.3 MP digital Camera
- Imaging Software
- In-built Illumination with intensity control
- X-Y Stage
- Set of 5 Lenses
- Connecting Cables

**Model VideoMagPRO-ST-LAP
Scope of Supply**

- Stereo Zoom Microscope
- Precision tracking, fine focus Stand , 460mm travel
- 1.3 MP digital Camera
- Imaging Software
- In-built Illumination with intensity control
- X-Y Stage
- Set of 5 Lenses
- Laptop Computer
- Connecting Cables

**Model VideoMagPRO-STMON-LAP
Scope of Supply**

- Stereo Zoom Microscope
- Precision tracking, fine focus Stand , 460mm travel
- 1.3 MP digital Camera
- Imaging Software
- In-built Illumination with intensity control
- X-Y Stage
- Set of 5 Lenses
- 15 Inch LCD Monitor
- Laptop Computer
- Connecting Cables

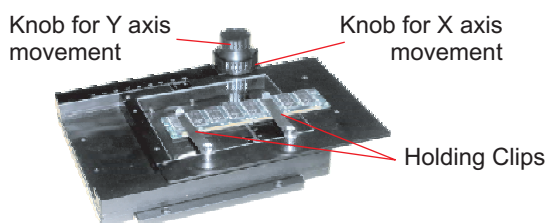
**Model VideoMagPRO-ST-LC
Scope of Supply**

- Stereo Zoom Microscope
- Precision tracking Stand, 250mm travel
- 1.3 MP digital Camera
- Imaging Software
- In-built Illumination with intensity control
- Set of 3 Lenses
- Connecting Cables

*** Note on Laptop Computer supplied with Models ending with -LAP:**

Laptop Computer supplied will be of any reputed make as DELL, with minimum or higher configuration: Dual Core Processor, 250 GB HDD, 1GB RAM, Window 7 Home Basic Operating System. We will not be responsible for any after-sales-services or support both for hardware and software. Customer will have to contact the respective Computer Vendor's Service Centre directly.

Adjustable X-Y Stage for Object Positioning



- 75×56mm travel in X-Y direction
- 116×96mm back light window.
- 95mm adapter is for stand base.
- Easy to use knobs for X-Y adjustment

Track Stand with Bottom Back Lighting (for all models except the one ending with -LC)

- Track Length: 500mm
- Travel Distance: 460mm
- Coaxial Focus: 23mm/circle
- Fine Focus: 0.56mm/circle
- Base Size: 320×316×21mm
- With a 95×5mm Glass Plate



shown trademarks are property of their respective owners.

While the information contained herein in, has been carefully compiled to the best of our knowledge, nothing is intended as representation and warranty on our part; and no statement shall be construed as recommendation to infringe any of existing patents. We accept no liability of whatsoever for any faults and errors in the information contained herein. Contents of this catalogue and specifications of the products, are subject to change without notice due to continuous improvements.

integrates Hi-Class Stereo Zoom viewing and a Hi-resolution Video imaging

Technical Specifications
(For All Models Except ending with suffix -LC)

Magnification	5x ~ 202x
Zoom	Continuous zoom
Working Distance	upto 150mm
Field of View	47.8 ~ 1.3 mm
Camera Sensor	½ inch CMOS, 1.3 Mega Pixel
Resolution	1280 x 960 Pixels
Camera Features	Auto Gain Control, Auto Exposure Control, Auto White Balance
Camera Interface	USB 2.0
Video Capture Resolutions	320 x 240, 640 x 480, 1280 x 1024 pixels
Lens	Built-in reduction lens system for high realistic image
Binocular Type & Angle of View	Stereo Zoom, 45 degree
Head	45 degree inclined Trinocular Head, rotatable 360 degrees
Interpupillary Distance	55 to 75mm to adjust for eye distance
Diopter Adjustment	± 5 diopter, provided on both ocular to correct for specific eye vision of users
Illumination (Top & Bottom)	Built-in LEDs based illumination with intensity control
Eyepiece Glass	1 inch large glass for less strain
Focus Movement	Using rack and pinion steel gears
Focusing Adjustment	90 mm (Max. Head Travel Distance)
Camera Sensitivity	1 Lux
Camera Transmission rate	16f/s@1280x1024; 30f/s@640x480; 30f/s@320x240
Exposure Type	Electronic Rolling Shutter (ERS)
White Balance	Automatic/Manual Operations supported
Exposure Control	Automatic/Manual Operations supported
Camera Programmable Control	Luminance, Gain, Exposure Time, Contrast, Saturation, Resolution and Gamma of Image are programable.
Software Features	Image Measurement, AO Function, Image Capture, Dynamic Depth of field

shown trademarks are property of their respective owners.

While the information contained herein in, has been carefully compiled to the best of our knowledge, nothing is intended as representation and warranty on our part; and no statement shall be construed as recommendation to infringe any of existing patents. We accept no liability of whatsoever for any faults and errors in the information contained herein. Contents of this catalogue and specifications of the products, are subject to change without notice due to continuous improvements.