

Lightweight Soldering Pencil • Easy-to-replace Plug-in type Heating Element

SINGLE Soldering Station for Lead Free, Fine Pitch SMD Chips, Solar Panels and Hi-power automotive & other components



“ESD” Safe

Add optional Solder Wire Feeding Station to increase operator's productivity and to avoid solder wire wastage



Digital display of Set & Actual temperatures

Digitized Pushbuttons for precise temperature control

Dry Cleaner

Cleaning Sponge

Heavy Duty Wobble-free Holder for Soldering Iron



Solder Feeder Station and attachment for Soldering Pencil

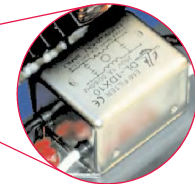


Note: Solder Wire is not part of supply

2 Common Process Temperatures can be programmed



Light weight Soldering Pencil



Main Power & Control Unit also has in mains powerline EMI & Surge Suppression Filter to suppress surges of mains power transients

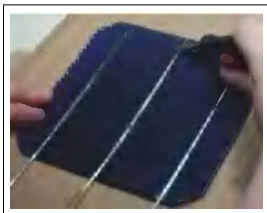
Scope of Supply

- Power & Control Unit
- Light Weight Soldering Pencil
- Soldering Tip 200G-2.4D
- Heavy Duty Support Rack
- Conventional Wet Cleaning Sponge
- Dry Metal Wool for Tip cleaning

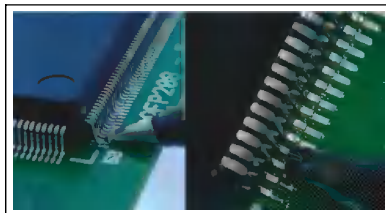
Specifications

- Power : 120 Watts
- Input Supply : 220VAC, 50Hz
- Temperature Range : 100°C ~ 500°C
- Temperature Stability : ±2% of final value
- Tip to Ground Resistance : < 2 Ohm
- Tip to Ground Potential : < 2mV

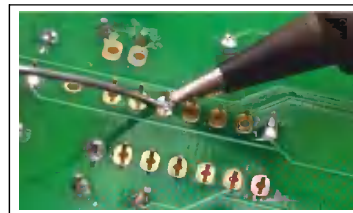
Multiple soldering applications with **SINGLE** 120 Watt Soldering Station Model DSSLF120



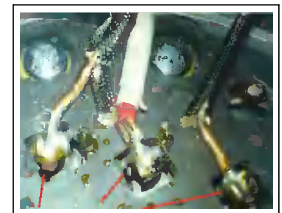
Solar Cell soldering



Leadfree fine pitch SMD soldering



Leadfree PTH soldering



Auto parts soldering

Why 120 Watt Soldering Station Model DSSLF120 is far superior than 80 or 90 Watt Soldering Stations?

- Each Soldering Joint has high reliability because of fast thermal recovery and optimal heat transfer to each joint

Because of above benefit, this Soldering Station is the preferred choice with automotive components and solar panel manufacturers - 100's are in operation all over India with them and majority are repeat repeat orders.

Other features:

- 1 In-built temperature Off-Set feature for calibration from panel itself to meet ISO 9000 requirements
- 2 Auto-Sleep and Auto-Shut-Off features get activated after pre-set time.
- 3 Supervisory process temperature lock feature: operators cannot change it.

shown trademarks are property of their respective owners.

While the information contained herein in, has been carefully compiled to the best of our knowledge, nothing is intended as representation and warranty on our part; and no statement shall be construed as recommendation to infringe any of existing patents. We accept no liability of whatsoever for any faults and errors in the information contained herein. Contents of this catalogue and specifications of the products, are subject to change without notice due to continuous improvements.

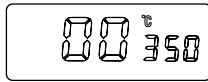
Warranty is 12 months from the date of invoice. It excludes all consumable parts as Heating Elements, Temperature Sensors, Soldering/Desoldering/Hot Air Tips, Cleaning Sponges, Cleaning Brass Wool

Lightweight Soldering Pencil • Easy-to-replace Plug-in type Heating Element

Salient Features of Model DSSLF120 intelligent Leadfree 120 Watt Digital Soldering Station

Work Modes

Work modes provide temperature limits. The supervisor can restrict the operator in a temperature range limits by choosing appropriate working mode. If customer has set 00 work mode then the temperature will not go beyond 350°C



| Mode | Temp. range | Alarm | Remark |
|------|---------------|-------|---|
| 00 | 100°C ~ 350°C | NO | Modes 10,11,12 & 13 have the alarm function. In these modes, the Soldering Station gives alarm when the difference between SET and ACTUAL temperature is more than 20°C |
| 10 | | YES | |
| 01 | 100°C ~ 400°C | NO | |
| 11 | | YES | |
| 02 | 100°C ~ 450°C | NO | |
| 12 | | YES | |
| 03 | 100°C ~ 500°C | NO | |
| 13 | | YES | |

Temperature Offset for Calibration

The Soldering Station has in-built temperature offset provision for calibration to meet ISO 9000. Customer does not need to open the Unit and adjust the trim pots.

Alarm Function

The Soldering Station has in-built alarm function to alert the operator. If there is more than 20°C temperature difference in SET and ACTUAL value then this alarm will alert the operator to check the Soldering Station. This alarm function is only functional within the specified Work Modes.

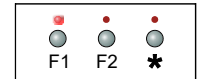
LCD Digital Display

Digital LCD Display for SET and ACTUAL temperatures at the same time and other various parameters.



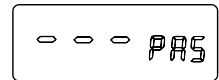
Program 2 Common Process Temperatures

This Station has provision to set and save two frequently used process temperatures. User can set these as per his requirement & recall the same just by pressing corresponding 'F1' or 'F2' buttons.



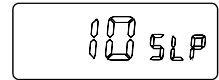
Supervisory Password Protection

The Soldering Station has password locking facility. After password locking by supervisor, the operators cannot change the pre-programmed process temperatures.



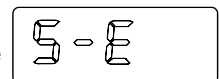
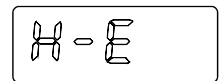
Sleep Time

Sleep time is useful to prolong the life of Soldering Tips and Heating Elements of Soldering Pencil. The time is programmable from 0 to 99 minutes as per customer's requirement.



Error Messages

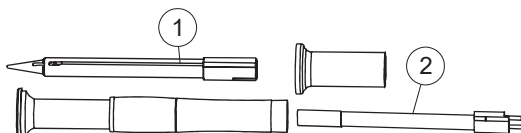
The Soldering Station has self diagnostic feature. It displays the fault of the Soldering Pencil. If the display shows H-E, it means the Heating Element is faulty. And if it shows S-E, means Temperature Sensor or sensor circuit is faulty.



Wide variety of Soldering Tips for Model DSSLF120 for different soldering applications

| Description | Diagram | Width A (mm) | Thickness B (mm) | Model |
|-------------|---------|--------------|------------------|-----------|
| Chisel Tip | | 0.8 | 0.5 | 200G-0.8D |
| | | 1.2 | 0.5 | 200G-1.2D |
| | | 1.6 | 0.5 | 200G-1.6D |
| | | 2.4 | 0.5 | 200G-2.4D |
| | | 3.2 | 0.5 | 200G-3.2D |
| | | 4.2 | 0.5 | 200G-4.2D |
| Pointed Tip | | Ø0.5 | - | 200G-B |
| Pointed Tip | | Ø0.2 | - | 200G-I |
| Sloped Tip | | Ø5 | - | 200G-5C |
| SMD Tip | | 3 | - | 200G-CM |

Assured availability, normally ex-stock, of Spare Parts for Soldering Pencil



| SNo. | Description | Remarks |
|------|-----------------|---------------------------------------|
| 1 | Soldering Tip | Replace if worn out/display shows S-E |
| 2 | Heating Element | Replace if display shows H-E |

shown trademarks are property of their respective owners.

While the information contained herein in, has been carefully compiled to the best of our knowledge, nothing is intended as representation and warranty on our part; and no statement shall be construed as recommendation to infringe any of existing patents. We accept no liability of whatsoever for any faults and errors in the information contained herein. Contents of this catalogue and specifications of the products, are subject to change without notice due to continuous improvements.